

DIVERTER VALVES

IT'S IN
THE **VALUE**
WE ADD

DMN
WESTINGHOUSE



FUTURE-PROOF VALUE SINCE 1950



TABLE OF CONTENTS

| | |
|-------------------------------------|-----------|
| DISCOVER OUR DIVERTER VALVES | 04 |
| ALREADY A CUSTOMER? | 07 |
| PLUG DIVERTER VALVES | 08 |
| PTD plug diverter valve | 09 |
| SPTD/SPTDS plug diverter valves | 10 |
| GPD plug diverter valve | 12 |
| TUBE DIVERTER VALVES | 14 |
| 2-TDV/3-TDV tube diverter valves | 15 |
| M-TDV tube diverter valve | 16 |
| FLAP DIVERTER VALVES | 18 |
| FDV-F/FDV-P flap diverter valves | 19 |
| BALL DIVERTER VALVES | 20 |
| BTD ball diverter valve | 21 |
| CONTACT | 22 |

DISCOVER OUR DIVERTER VALVES

BACKGROUND

Established in 1950, DMN-WESTINGHOUSE has been a worldwide, trusted supplier of rotary valves and diverter valves for decades, serving a large range of dry bulk solids processing industries. True to our promise to provide future-proof value, our experts continue monitoring the performance of our products in practice, including in the context of customer feedback and emerging new technologies and practices.

OUR DIVERTER RANGE

Our staff have developed a complete range of premium diverter valves for the transport of any type of dry bulk solid in powder, granule, or pellet form. We offer plug, tube, flap, and ball diverter valves – all with the DMN-WESTINGHOUSE quality mark.

These durable diverters can be further customised to your specifications and are easy to integrate with your current rotary valves.

In this brochure we present an overview of the DMN-WESTINGHOUSE diverter valve range. We also have individual product information sheets with more details for every diverter. Please contact your sales team, sales representative, or local distributor for more information.

PLUG TYPE



PTD plug diverter valve



SPTD diverter valve



SPTDS diverter valve



GPD diverter valve

TUBE TYPE



2-TDV diverter valve



3-TDV diverter valve



M-TDV diverter valve

FLAP TYPE



FDV-F/FDV-P diverter valve

BALL TYPE



BTD diverter valve

“Our operators
are really happy
with the PTD.
It saves them
so much time!”

Martin Gilbert
Line Manager

ALREADY A CUSTOMER?

Many companies know us already from our premium rotary valves. So why not order your next diverter with us as well?

This gives you a number of benefits:

- Diverter valves from your trusted supplier, with the premium quality of DMN-WESTINGHOUSE products
- No need for bothersome onboarding journeys: you know us and we know you
- We are already deeply familiar with your setup and processes, your applications, and your products
- A single and familiar point of contact
- Smooth admin processes

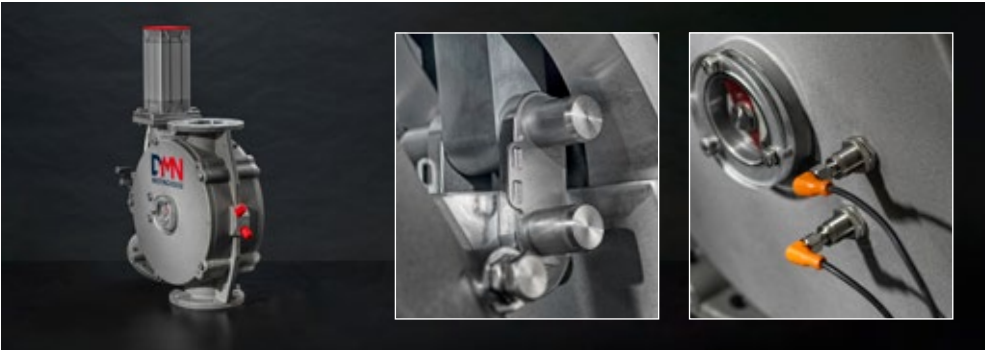




PLUG DIVERTER VALVES

The constant onslaught of coarse and/or viscous materials asks for a sturdy, yet smart diverter. Sturdy, so that your valve will hold up for many years. Smart, to allow for superb ease of cleaning. Add to that the requirement of minimum product degradation and you'll understand why it requires 75 years of expertise to produce premium plug diverter valves.

DMN-WESTINGHOUSE's plug diverter valves are especially designed for minimum degradation. Precision machining, proper sealing, and an obstruction-free internal geometry guarantee a smooth passage of your product.



PTD PLUG DIVERTER VALVE

This plug-type diverter valve features a user-friendly, foolproof design that enables quick on-site internal examination, servicing, and – when necessary – replacement of seals. The PTD design features no moving parts on the outside and complies with all current guidelines regarding safety in the workplace.

Glue-free seal replacement, faster checks, minimal servicing needs, and maximum user-friendliness each lead to a greater performance. The PTD sets a new standard in servicing efficiency, ensuring more uptime and reduced expenses.

- Suitable for product temperatures from -25 °C to +80 °C
- Pressure up to 3 barg with static seals
- Pressure up to 6 barg with inflatable seals
- All product contact surfaces are stainless steel AISI 316/DIN 1.4404
- No moving parts on the outside
- Versions with electrical drive and/or wear-resistant pipes available
- EC 1935/2004- and FDA-compliant
- ATEX 2014/34/EU certification available

| AVAILABLE SIZES | | | | | | | |
|-----------------|---------|-----------|---------|----------|----------|----------|----------|
| PTD | 50 (2") | 65 (2.5") | 80 (3") | 100 (4") | 125 (5") | 150 (6") | 200 (8") |



SPTD



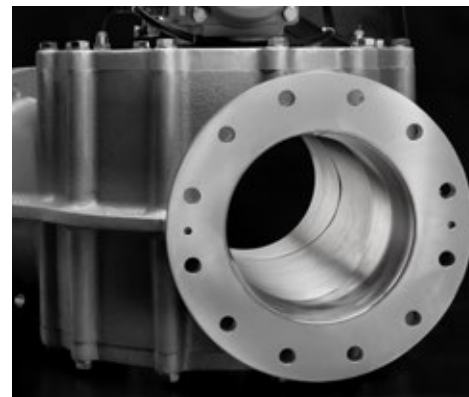
SPTDS



SPTD/SPTDS PLUG DIVERTER VALVES

For our single-pipe plug-type diverter valves, you have the choice of a model where you can choose between a static and an inflatable seal (SPTD), and a smaller, static seal-only diverter (SPTDS).

The user-friendly and compact design enables quick on-site internal examination, servicing, and when necessary, replacement of seals. The SPTD and SPTDS save space at your plant, increase efficiency, and minimise product degradation.



- Suitable for product temperature from -25 °C to +80 °C
- Pressure shock resistant up to 10 barg
- Universal application; diverting only
- No moving parts on the outside
- EC1935/2004- and FDA-compliant version available
- ATEX 2014/34/EU certification available



PRODUCT-SPECIFIC SPECIFICATIONS

SPTD

- Pressure up to 3 barg with static seals
- Pressure up to 6 barg with inflatable seals
- Static or inflatable seals
- Larger size, but still a compact model

SPTDS

- Pressure up to 1 barg
- Static seals
- Non-standard flange connections make for a compact design

AVAILABLE SIZES

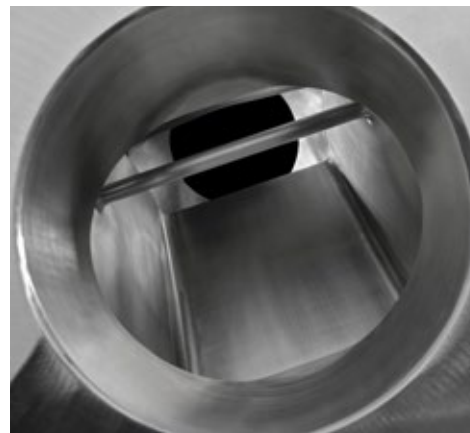
| | | | | | | | | | | |
|-------|----------|------------|----------|------------|-----------|-------------|-----------|-------------|-----------|-----------|
| SPTD | 150 (6") | 162 (8.5") | 200 (8") | 213 (8.5") | 250 (10") | 267 (10.5") | 300 (12") | 318 (12.5") | 350 (14") | 400 (16") |
| SPTDS | 50 (2") | 65 (2.5") | 80 (3") | 100 (4") | 125 (5") | | | | | |



GPD PLUG DIVERTER VALVE

A one-way gravity plug diverter valve for a wide range of dry bulk solids. The GPD's design ensures swift and easy access to all contact surfaces when cleaning in place, while the diverter is also easily detachable when the need arises.

Available in a range of finishes, the GPD is designed to minimise product contamination and maximise your uptime.



- Suitable for product temperatures from -10 °C up to +80 °C
- No pressure difference allowed
- Available with a cast iron, aluminium, or stainless steel AISI 316 housing, with either a mild steel, stainless steel AISI 316, or wear-resistant plug
- One-piece body with removable end plates and rotating plug assembly
- Pneumatic, electric, or manual operation
- USDA-accepted versions available
- EC1935/2004- and FDA-compliant versions available
- ATEX 2014/34/EU certification available

AVAILABLE SIZES

| GPD | 150 (6") | 200 (8") | 250 (10") | 300 (12") |
|-----|----------|----------|-----------|-----------|
|-----|----------|----------|-----------|-----------|

TUBE DIVERTER VALVES

Featuring a flexible internal tube that aligns with the selected outlet, tube diverters ensure a smooth, uninterrupted product flow. This makes for a minimal pressure drop, reducing the risk of product contamination and degradation.

Suitable for non-abrasive to mildly abrasive powders, granules, and pellets, tube diverter valves are a great option for many industries, including food and pharmaceuticals.



2-TDV/3-TDV TUBE DIVERTER VALVES

Your choice of a premium tube diverter valve with 2 or 3 ports. These hygienic, USDA-accepted, and space-saving tube diverter valves route pneumatically conveyed powders, granules, or pellets to or from 2 or 3 locations.

The 2-TDV and 3-TDV offer precise alignment of your conveying lines, optimal speed, and minimal pressure loss. Executed in premium material, they ensure smooth transport of your dry bulk solids, minimising product degradation.

- Suitable for product temperature from -20 °C to + 100 °C
- Pressure range: -0.8 to +3 barg
- Multiple choice of line connections: from a simple pipe connection to a milk coupling
- Inflatable EPDM seals
- USDA-accepted versions available
- EC1935/2004- and FDA-compliant version available
- ATEX 2014/34/EU certification available

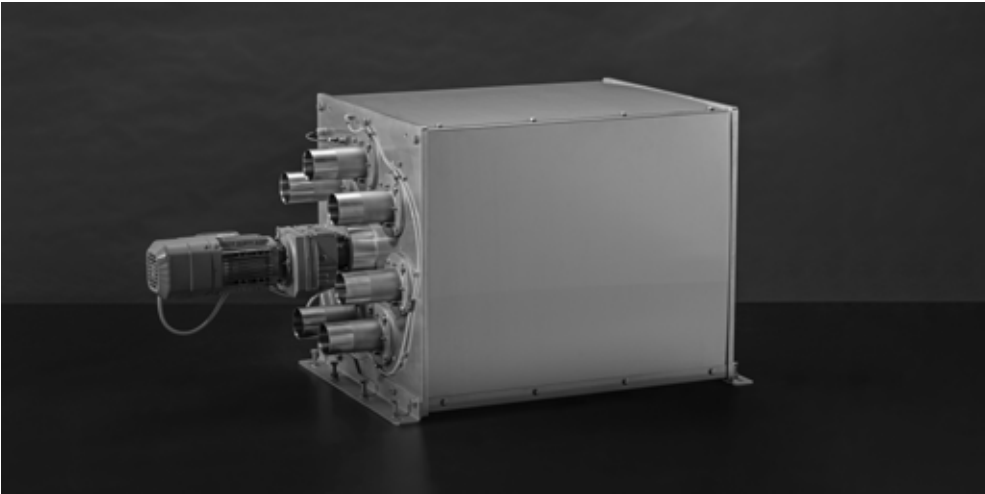
AVAILABLE SIZES

| 2-TDV/3-TDV | 40 (1.5") | 50 (2") | 65 (2.5") | 80 (3") | 100 (4") | 125 (5") | 150 (6") |
|-------------|-----------|---------|-----------|---------|----------|----------|----------|
|-------------|-----------|---------|-----------|---------|----------|----------|----------|



M-TDV TUBE DIVERTER VALVE

This multiport tube diverter valve is a hygienic, USDA-accepted, and space-saving solution that ensures optimal product quality. It efficiently handles diverting (one-to-multiple) and converging (multiple-to-one) flows.



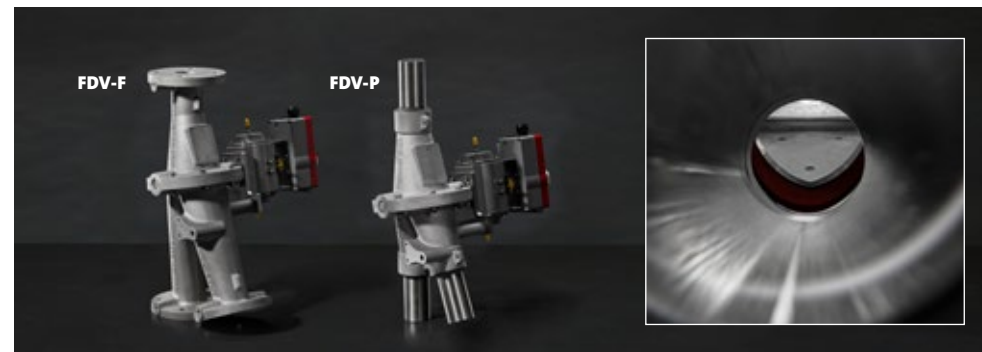
The M-TDV is a reliable replacement for multiple PTDs and features a smart design that minimises pressure loss and reduces product degradation. With exact pipe alignment, a smooth bore pipe between inlet and outlet, a robust swan neck, and other smart features, the M-TDV allows you to maximise the value of your dry bulk solids.

- Suitable for product temperature from -20 °C to + 100 °C
- Pressure range: -0.8 to +3 barg
- Converging and diverging applications
- Up to 14 ports in a compact design
- Minimal product degradation
- USDA-accepted versions available
- EC 1935/2004- and FDA-compliant
- ATEX 2014/34/EU certification available

| AVAILABLE SIZES | | | | | | | |
|-----------------|------------|------------|------------|------------|------------|-----------|-----------|
| M-TDV | 40 (1.5") | 50 (2") | 65 (2.5") | 80 (3") | 100 (4") | 125 (5") | 150 (6") |
| Number of ports | 4 up to 14 | 4 up to 13 | 4 up to 12 | 4 up to 11 | 4 up to 10 | 4 up to 8 | 4 up to 7 |

FLAP DIVERTER VALVES

Flap diverters are a cost-effective solution for the transport of non-abrasive to mildly abrasive powders, granules, and pellets.



FDV-F/FDV-P FLAP DIVERTER VALVES

These flap-type diverter valve are designed for pneumatic low-pressure conveying systems. Available in two versions, the FDV-F offers flange connections, while the FDV-P features pipe connections. The FDVs boast a compact form, simple construction, and optimal sealing. With their rapid pivoting action and minimal pressure loss, they allow for optimal efficiency and maximum uptime.

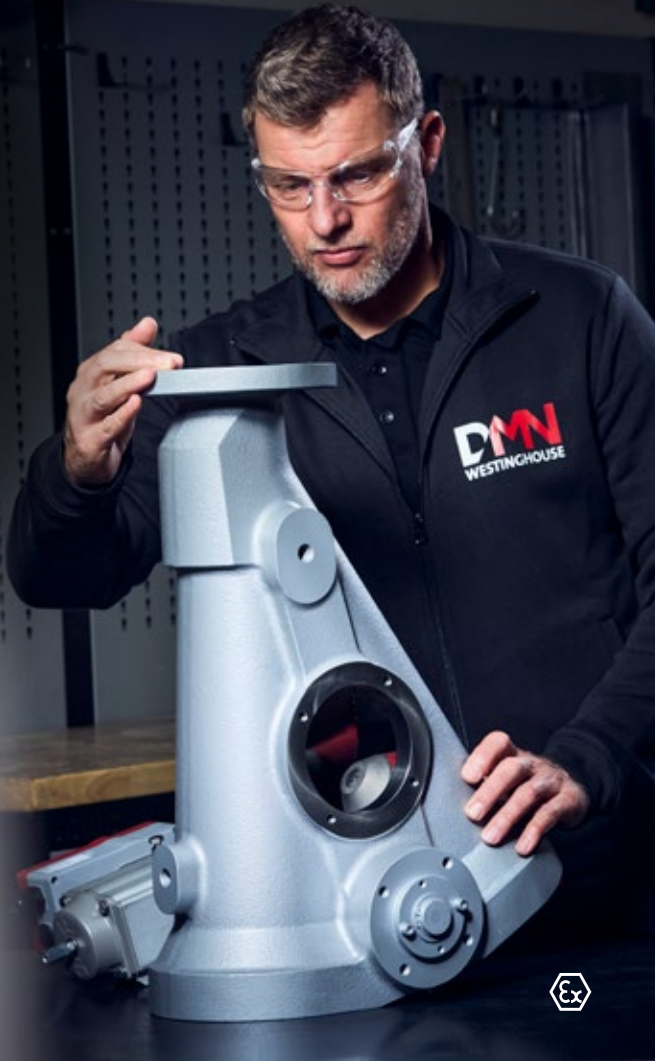
- Suitable for product temperature from -10 °C to +80 °C
- Pressure range: -0.3 to +2 barg
- Available with flange or pipe fitting
- Compact form, simple construction, optimal sealing
- Minimal pressure loss
- EC1935/2004- and FDA-compliant version available
- ATEX 2014/34/EU certification available

AVAILABLE SIZES

| | | | | | | | | |
|-------|---------|-----------|---------|----------|----------|----------|----------|-----------|
| FDV-F | 50 (2") | 65 (2.5") | 80 (3") | 100 (4") | 125 (5") | 150 (6") | 200 (8") | 250 (10") |
| FDV-P | 50 (2") | 65 (2.5") | 80 (3") | 100 (4") | 125 (5") | 150 (6") | | |

BALL DIVERTER VALVES

Ball-type diverter valves are designed for hard work: conveying abrasive materials under high pressure and in high temperatures. You can find DMN-WESTINGHOUSE's ball-type diverter valves in many different installations around the world.



BTD BALL DIVERTER VALVE

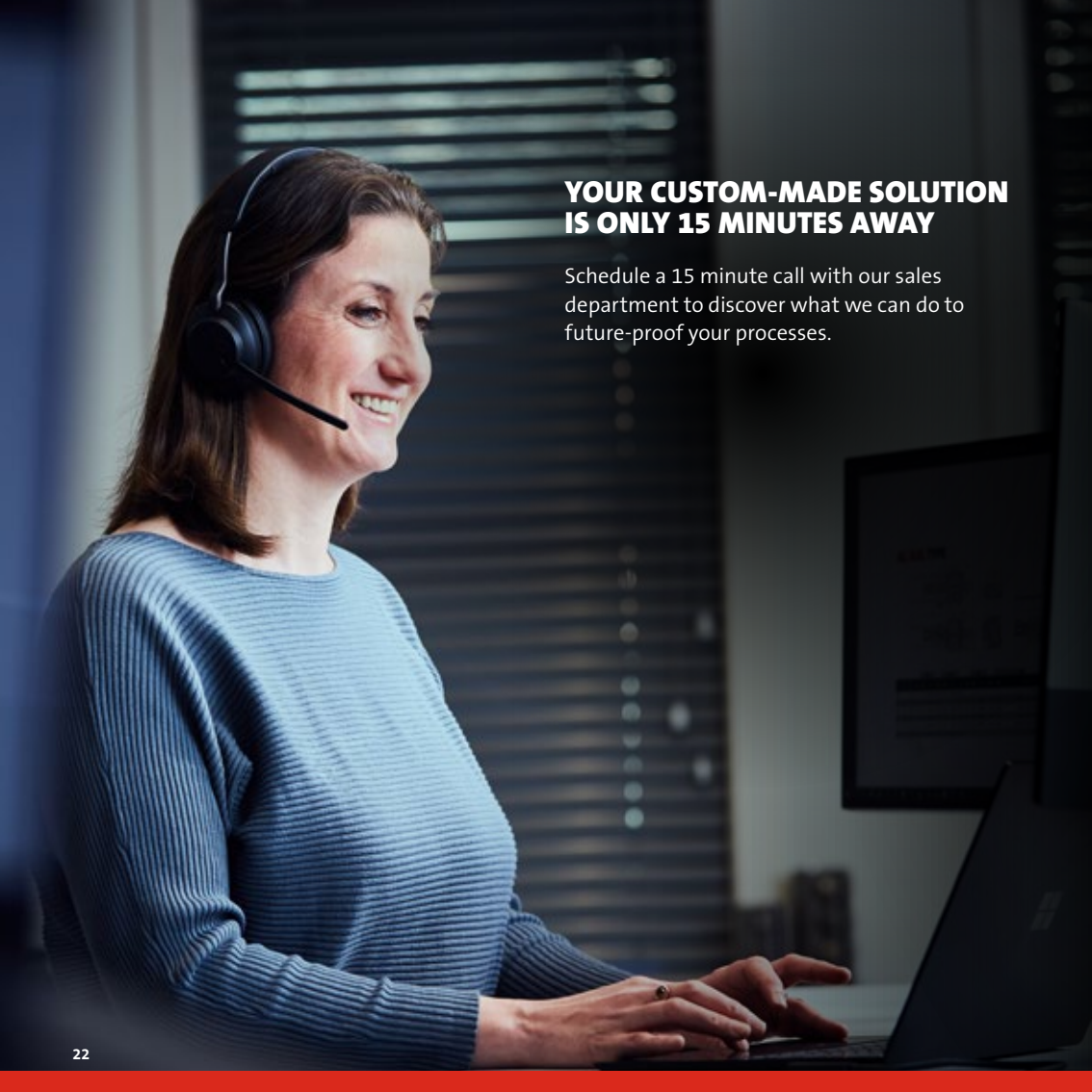
This ball-type diverter valve is suitable for both diverting and converging applications. In diverting mode, the product forms its own wear surface, while in converging mode, the diverter's impact area is reinforced for durability.

The BTB offers great value and performance under extreme circumstances. The possibility of in-place seal replacement makes servicing easy and quick, ensuring lower costs due to minimal downtime.

- Suitable for product temperature from -10 °C to +80 °C; options for higher temperatures are available on request
- Pressure range: -0.5 to +6 barg
- Especially designed for transport of abrasive dry bulk solids
- Suitable for systems with high pressures and temperatures
- Two removable side covers allow for seal replacement in-place
- Body made from ductile cast iron
- ATEX 2014/34/EU certification available

AVAILABLE SIZES

| BTD | 65 (2.5") | 80 (3") | 100 (4") | 125 (5") | 150 (6") | 200 (8") | 250 (10") |
|-----|-----------|---------|----------|----------|----------|----------|-----------|
|-----|-----------|---------|----------|----------|----------|----------|-----------|



YOUR CUSTOM-MADE SOLUTION IS ONLY 15 MINUTES AWAY

Schedule a 15 minute call with our sales department to discover what we can do to future-proof your processes.

CONTACT

WORLDWIDE DISTRIBUTION NETWORK

We are a global company with sales offices and distributors around the world. With our knowledge and expertise, we provide custom-made solutions and support to meet the unique needs of each customer. For more information and other inquiries, please contact your local sales team or distributor. You can find a complete list of distributors at dmnwestinghouse.com/distributors.

THE NETHERLANDS

DMN-WESTINGHOUSE

Gieterij 3
2211 WC Noordwijkerhout
+31 252 361 800
sales@dmnwestinghouse.com

GERMANY

DMN SGT GMBH

Lanzstraße 1
D-21244 Buchholz in der Nordheide
+49 4181 931 40
dmn.sgt@dmnwestinghouse.com

FRANCE

DMN FRANCE SAS

Abbaye Royale de Yerres
20, Rue Raymond Poincaré
F-91330 Yerres
+33 1 69 49 85 70
contact.fr@dmnwestinghouse.com

USA

DMN INC.

220 South Woods St.
West Memphis, AR 72301
+1 870 733 9100
sales.us@dmnwestinghouse.com

UNITED KINGDOM

DMN UK LTD

Units 1 & 2, 9 Harris Road
Porte Marsh Industrial Estate
Calne, Wiltshire, SN11 9PT, UK
+44 1249 818 400
dmn.uk@dmnwestinghouse.com

INDIA

DMN INDIA PRIVATE LIMITED

No.271, Womens Industrial Estate
Kattur, Thirumullaivoyal, Chennai
600062, Tamil Nadu, India
+91 7418699914
india@dmnwestinghouse.com



DMNWESTINGHOUSE.COM