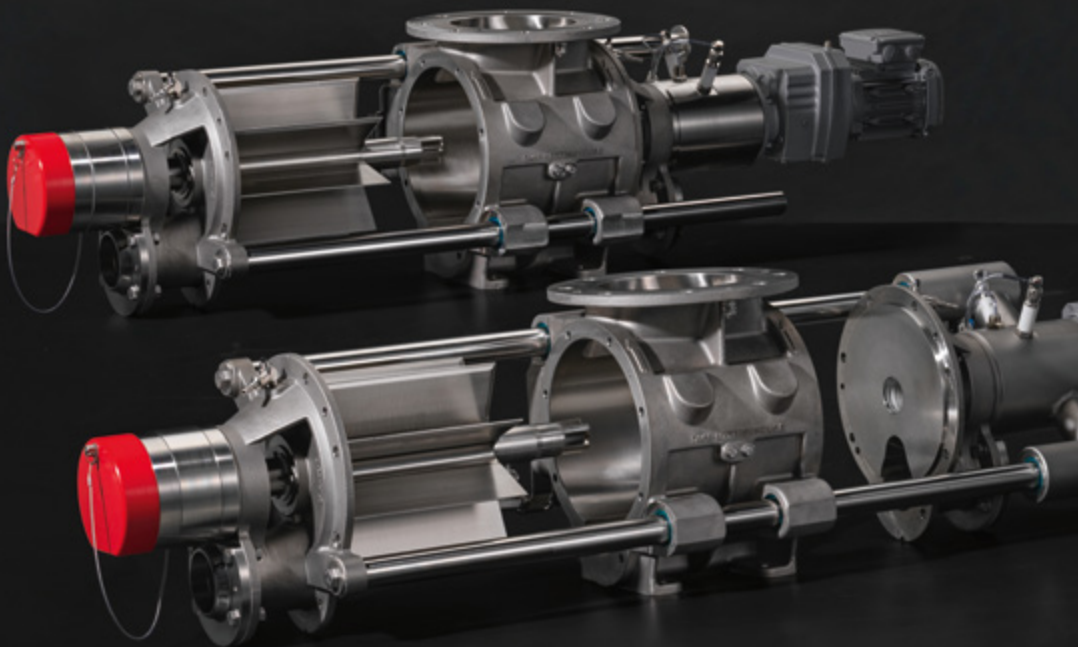


THE FUTURE STANDARD FOR SAFETY, HYGIENE AND CLEANABILITY

MZC-I AND MZC-II **ROTARY VALVES**



FUTURE-PROOF VALUE SINCE 1950

THE FUTURE STANDARD FOR SAFETY, HYGIENE AND CLEANABILITY

Meet the MZC-I and MZC-II, our top-level range of rotary valves that sets the standard in the field of safety, hygiene and cleanability. Today and in the future. Extreme durability and efficiency, combined with easy cleanability, make the MZC-I and MZC-II the reliable core of your production processes. Maximize your output while cutting time and costs for maintenance and thorough cleaning. That's the MZC-I and MZC-II for you.

MZC-I: The all-purpose rotary valve with a compact design.

MZC-II: The ultimate rotary valve that meets the highest hygiene requirements.



USDA



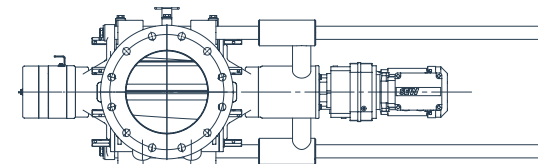
MZC-I



MZC-II



MZC-I AND MZC-II ROTARY VALVES BRING YOU EASY ACCESS AND SAFE CLEANABILITY



THE MZC-I AND MZC-II ROTARY VALVES OFFER YOU:

- Unprecedented cleanability
- Easier and safer maintenance than ever before
- Applications for a broad range of industries
- Cleaning In Place (CIP). The rotor can remain in position during cleaning
- Additional safety through an integrated emergency safety switch

Which rotary valve you choose depends on the requirements for hygiene and access to the rotary valve.

MZC-I CHARACTERISTICS:

- Space efficient one-sided opening
- Various drive options

MZC-II CHARACTERISTICS:

- Opens on two sides for unprecedented easy access and superior cleanability
- Only a direct drive is offered, to allow for ease of opening and cleaning

QUALIFIED, VERIFIED, CERTIFIED

In the dry bulk industry hygiene is of top priority. Every piece of machinery, from rotary valves and diverter valves to other related components, must meet the highest standards. At DMN-WESTINGHOUSE we take great pride in meeting these standards.

Our MZC-I and MZC-II rotary valves are ATEX certified for both dust and gas.

This means that you have the assurance that our products are of perfect quality. As a result, it is easier to obtain an ATEX marking or acceptance for the entire installation.



OPENING THE DRIVE-SIDE SLIDING UNIT (MZC-II)

Incredibly easy access allows deep cleaning of the end cover and spigot, the areas where powder residue settles.

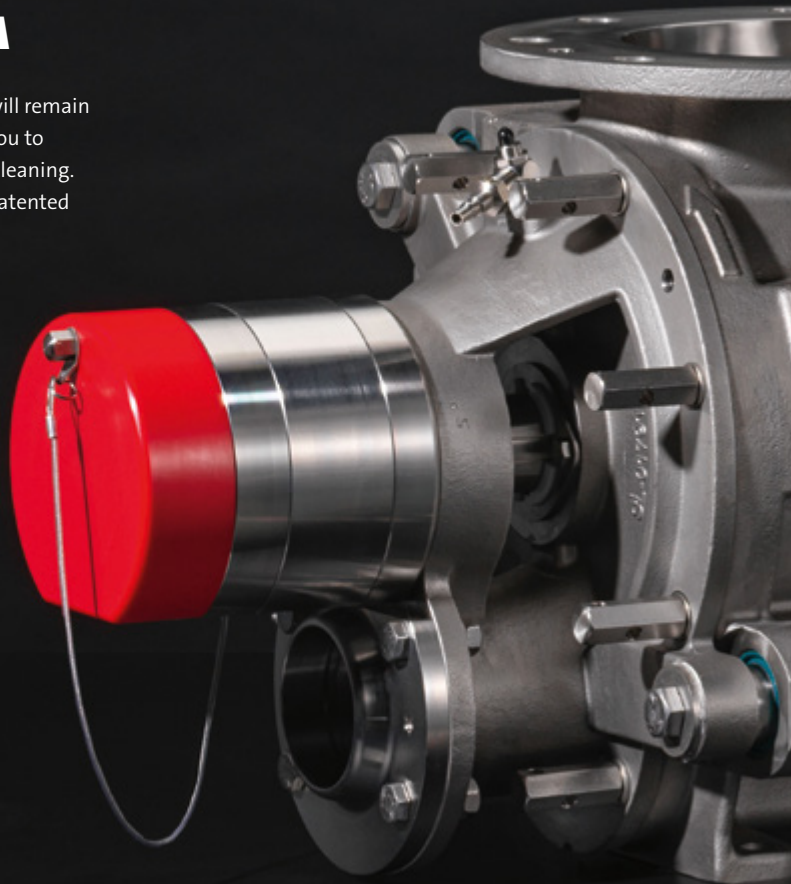


ROTOR LOCKING MECHANISM

In order to clean the rotary valve safely, you can lock the rotor to prevent it from turning.

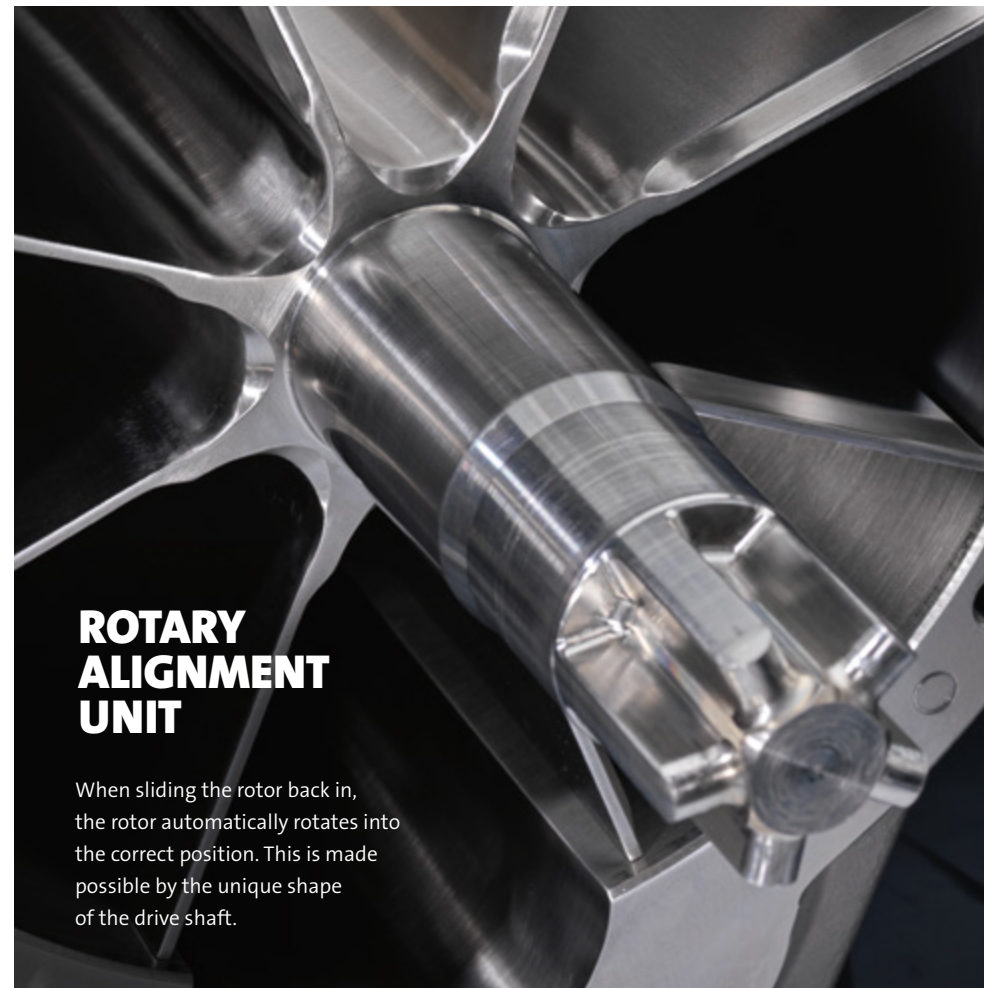
PRECISION ALIGNMENT MECHANISM

After sliding out, the rotor will remain perfectly level. This allows you to rotate the rotor for perfect cleaning. This mechanism has been patented by DMN-WESTINGHOUSE.



ROTARY ALIGNMENT UNIT

When sliding the rotor back in, the rotor automatically rotates into the correct position. This is made possible by the unique shape of the drive shaft.



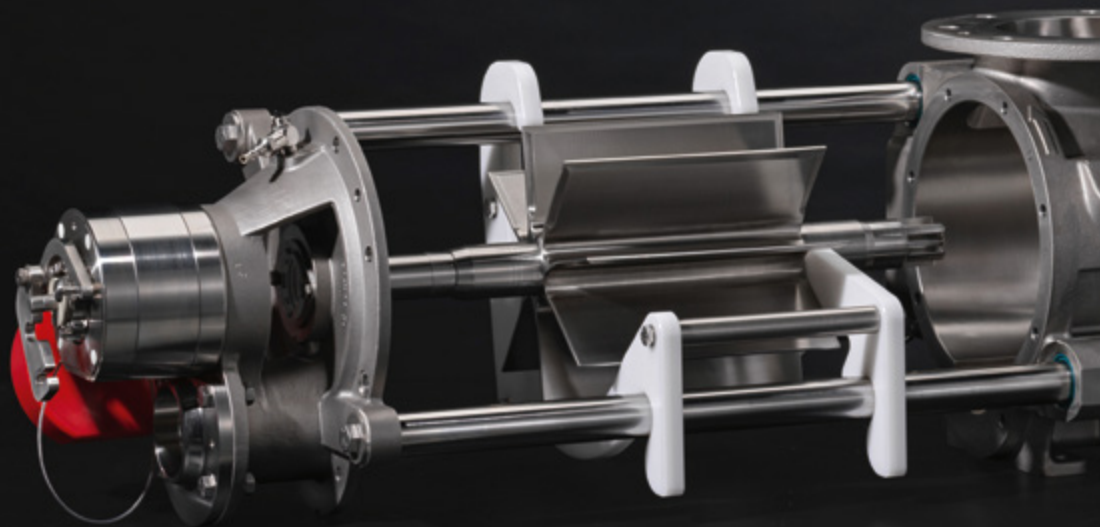


QUICK-RELEASE AIR CONNECTIONS

Easier and smarter connection or storage
of disconnected air tubes.

SPECIALLY DESIGNED CRADLE

The rotor can even be taken out as a complete unit (finger-safe rotor extraction)
and placed in a specially designed cradle for precision cleaning.





ROTOR INTERFERENCE DETECTION **RID 3.0**

The Rotor Interference Detection system (RID) detects unwanted contact between the rotor, body, or end covers and warns the operators of possible contamination of the conveyed product. Incorporate the RID into your system for alerts on product accumulation or metal contact. Next to its analogue outputs, the third-generation RID offers EtherNet/IP™ or 4-20mA output communication, enhancing your network's automation capabilities.

DMN-WESTINGHOUSE rotary valves are produced to the strictest tolerances, and rotor movement is not likely to occur. However, movement can occur if the rotor becomes damaged by foreign objects passing through the rotary valve. In that case, the rigid and straightforward design of the RID ensures problem-free operation. It features a user-friendly service tool for maintenance and troubleshooting. CE and CSA certification confirm compliance with international safety and performance standards.



SAS-II, ROTARY VALVE OUTBOARD BEARING SHAFT SEAL

More than ever, process engineers across the food and pharmaceutical industries need reliable, hassle-free equipment. Rotary valves must be fail-safe and prevent leakage problems – all day, every day. SAS-II is designed to prevent common leakage without fail.

A pressure regulator set with flow regulators will ensure a constant flow independent of the pressure inside the valve. Any pressure changes inside the valve (either a drop in pressure due to a blower failure or a rise for example due to blockage) will not affect the airflow through the shaft seals. This ensures the function and lifetime of the seal.

SAS-II CHARACTERISTICS:

- Easy maintenance
- Compact design
- Stainless steel cover plate to prevent overtightening
- SAS-II is the preferred shaft seal arrangement for Dairy rotary valves





APPLICATIONS

At DMN-WESTINGHOUSE we know our customers and what they need in order to excel. Thanks to our decades of experience in the world of dry bulk handling we can offer custom-made solutions for a broad range of industries. For example, the MZC-I and MZC-II rotary valves are suitable for the following industries:

- ✓ Animal feed
- ✓ Cereal
- ✓ Coffee
- ✓ Cosmetics
- ✓ Dairy
- ✓ Food
- ✓ Infant formula
- ✓ Nutrition
- ✓ Pet food
- ✓ Pharmaceutical



ROTARY VALVE SIZE AND MEASUREMENTS

The MZC-I & MZC-II high-duty rotary valves are available in various types and sizes.
For every imaginable application, DMN-WESTINGHOUSE offers a (custom-made) solution.

VALVE TYPE	DESCRIPTION
AL	Drop through rotary valve
AXL	Drop through rotary valve with an enlarged inlet
NR	Drop through rotary valve
BL	Blow through rotary valve
BXL	Blow through rotary valve with an enlarged inlet Designed for products with poor flowability
BXXL	Blow through rotary valve with an extra enlarged inlet Designed for products with poor flowability

VALVE TYPE	VALVE SIZE					
AL	150 (6")	175 (7")	200 (8")	250 (10")	300 (12")	350 (14")
AXL		200 (8")	250 (10")	300 (12")	350 (14")	
NR				347		
BL	150 (6")	175 (7")	200 (8")	250 (10")	300 (12")	350 (14")
BXL		200 (8")	250 (10")	300 (12")	350 (14")	
BXXL				350 (14")		
Ltr./rev. At 100% filling	2.5	5.5	10.5	19	34	58
ft³/rev. At 100% filling	0.09	0.18	0.37	0.67	1.20	2.05



CONTACT



WORLDWIDE DISTRIBUTION NETWORK

We are a global company with sales offices and distributors around the world. With our knowledge and expertise, we provide custom-made solutions and support to meet the unique needs of each customer. For more information and other inquiries, please contact your local sales team or distributor. You can find a complete list of distributors at dmnwestinghouse.com/distributors.

THE NETHERLANDS

DMN-WESTINGHOUSE

Gieterij 3
2211 WC Noordwijkerhout
+31 252 361 800
sales@dmnwestinghouse.com

USA

DMN INC.

220 South Woods St.
West Memphis, AR 72301
+1 870 733 9100
sales.us@dmnwestinghouse.com

GERMANY

DMN SGT GMBH

Lanzstraße 1
D-21244 Buchholz in der Nordheide
+49 4181 931 40
dmn.sgt@dmnwestinghouse.com

UNITED KINGDOM

DMN UK LTD

Units 1 & 2, 9 Harris Road
Porte Marsh Industrial Estate
Calne, Wiltshire, SN11 9PT, UK
+44 1249 818 400
dmn.uk@dmnwestinghouse.com

FRANCE

DMN FRANCE SAS

Abbaye Royale de Yerres
20, Rue Raymond Poincaré
F-91330 Yerres
+33 1 69 49 85 70
contact.fr@dmnwestinghouse.com

INDIA

DMN INDIA PRIVATE LIMITED

No.271, Womens Industrial Estate
Kattur, Thirumullaivoyal, Chennai
600062, Tamil Nadu, India
+91 7418699914
india@dmnwestinghouse.com



DMNWESTINGHOUSE.COM