

MZC-I DAIRY AL/AXL BL/BXL BXXL

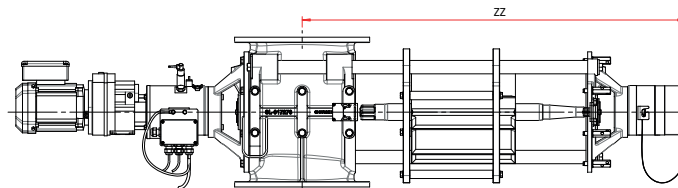
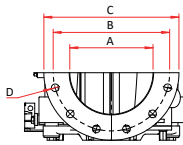
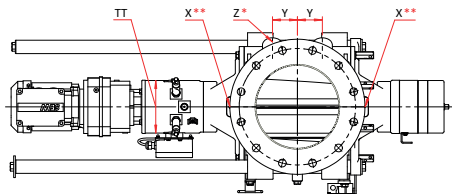
DMN
WESTINGHOUSE



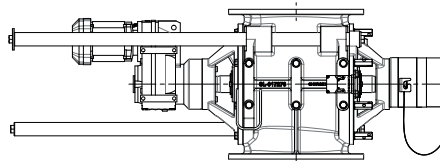
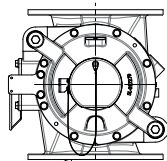
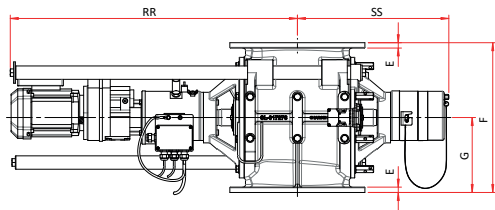
THE FUTURE STANDARD FOR SAFETY,
HYGIENE AND CLEANABILITY

FUTURE-PROOF VALUE SINCE 1950

AL/AXL TYPE



Direct drive with coupling [SEW RF]



Direct drive [SEW FAZ]

AL
Drop through rotary valve

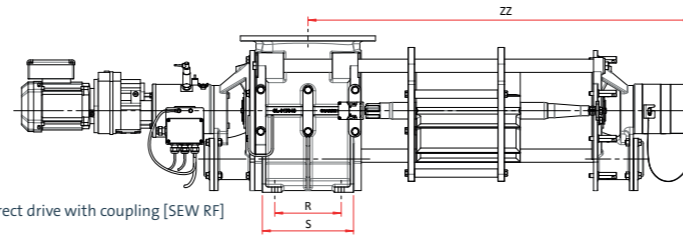
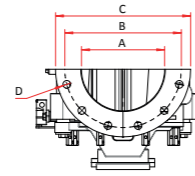
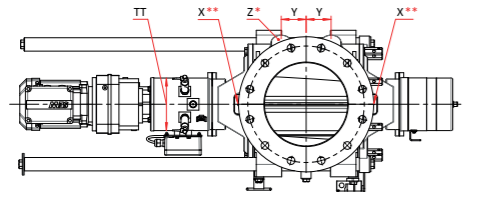
AXL
Drop through rotary valve with an enlarged inlet. Designed for products with poor flowability

AL	AXL	Ltr/rev	DIN			ANSI			E	DIN			ANSI			X**	Y	Z*	RR	SS	TT	ZZ	Type SEW	≥Nm						
			ØA	ØB	D	ØC	ØB	D		ØA	ØB	D	ØC	ØB	D										E	F	G			
150		2,5	150	240	8XØ23	285	241,3	8xØ22.2	12																					
175	200	5,5	175	270	8XØ23	315	----	----	14	200	295	8XØ23	343	298,4			8xØ22.2	14	330	165	1/4" (Ø10)	53	UNEF 1 1/8"	780	390	120	955	RF37 / FAZ37	150	
200	250	10,5	200	295	8XØ23	343	298,4	8xØ22.2	14	250	350	12XØ23	406	361,9			12xØ25.4	16	390	195	1/4" (Ø10)	65	UNEF 1 1/8"	850	435	160	1140	RF47 / FAZ47	210	
250	300	19	250	350	12XØ23	406	361,9	12xØ25.4	16	300	400	12XØ23	483	431,8			12xØ25.4	21	450	225	1/4" (Ø10)	75	UNEF 1 1/8"	865	460	160	1155	RF47 / FAZ47	285	
300	350	34	300	400	12XØ23	483	431,8	12xØ25.4	21	350	460	16XØ23	530	476,2			12xØ28.6	26	540	270	1/4" (Ø10)	95	UNEF 1 1/8"	1090	600	200	1480	RF57 / FAZ57	410	
350		58	350	460	16XØ23	530	476,2	12xØ28.6	26																					

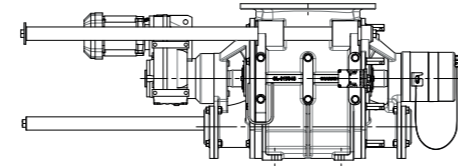
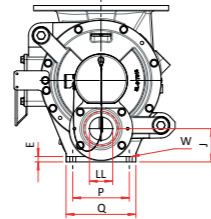
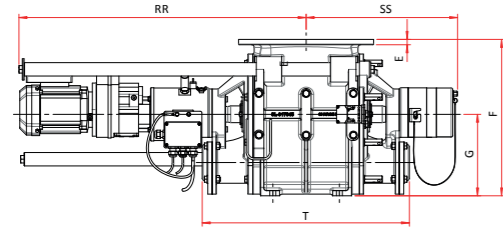
AL MZC-I

AXL MZC-I

BL/BXL TYPE



Direct drive with coupling [SEW RF]



Direct drive [SEW FAZ]

BL
Blow through rotary valve

BXL
Blow through rotary valve with an enlarged inlet. Designed for products with poor flowability

THE MZC-I ROTARY VALVES OFFER YOU:

- Unprecedented cleanability
- Easier and safer maintenance than ever before
- Applications for a broad range of industries
- Cleaning In Place (CIP): the rotor remains in position during cleaning
- Additional safety through an integrated emergency safety switch
- Efficient use of space with one-sided opening
- Various drive options



* By default not pre-drilled

** Air purge connection

Technical modifications are possible, dimensions in mm.

BL	BXL	Ltr/rev	DIN					ANSI					DIN					ANSI					X**	Y	Z*	LL	LL max.	RR	SS	TT	ZZ	Type SEW	≥Nm			
			ØA	ØB	D	ØC	ØB	D	E	ØA	ØB	D	ØC	ØB	D	E	F	G	J	P	Q	R												S	T	W
150		2,5	150	240	8XØ23	285	241,3	8xØ22.2	12						295	155	65	110	140	100	154	462	4XØ12	G1/4"(Ø10)	40	UNEF 1 1/8"	35	50	760	375	120	925	RF37	110		
175	200	5,5	175	270	8XØ23	315	----	----	14	200	295	8XØ23	343	298,4	8xØ22.2	14	340	175	75	130	160	130	190	502	4XØ14	G1/4"(Ø10)	53	UNEF 1 1/8"	50	65	780	390	120	955	RF37	150
200	250	10,5	200	295	8XØ23	343	298,4	8xØ22.2	14	250	350	12XØ23	406	361,9	12xØ25.4	16	410	215	90	160	200	160	230	572	4XØ18	G1/4"(Ø10)	65	UNEF 1 1/8"	50	80	850	435	160	1140	RF47 / FAZ47	210
250	300	19	250	350	12XØ23	406	361,9	12xØ25.4	16	300	400	12XØ23	483	431,8	12xØ25.4	21	470	245	100	170	210	200	274	622	4XØ18	G1/4"(Ø10)	75	UNEF 1 1/8"	70	100	865	460	160	1155	RF47 / FAZ47	285
300	350	34	300	400	12XØ23	483	431,8	12xØ25.4	21	350	460	16XØ23	530	476,2	12xØ28.6	26	565	295	120	190	240	260	350	724	4XØ23	G1/4"(Ø10)	75	UNEF 1 1/8"	100	125	1090	600	200	1480	RF57 / FAZ57	410
350		58	350	460	16XØ23	530	476,2	12xØ28.6	26						665	335	132,5	220	270	310	406	794	4XØ23	G1/4"(Ø10)	112	UNEF 1 1/8"	125	150	1155	635	200	1545	RF57 / FAZ57	560		

BL MZC-I

BXL MZC-I

CONTACT

For more information and other inquiries, please contact us via our sales teams or distributors. You can find the complete list of distributors at dmnwestinghouse.com/distributors.

THE NETHERLANDS

DMN-WESTINGHOUSE

+31 252 361 800
sales@dmnwestinghouse.com

FRANCE

DMN FRANCE SAS

+33 1 69 49 85 70
contact.fr@dmnwestinghouse.com

UK

DMN UK LTD

+44 1249 818 400
dmn.uk@dmnwestinghouse.com

GERMANY

DMN SGT GMBH

+49 4181 931 40
dmn.sgt@dmnwestinghouse.com

USA

DMN INC.

+1 870 733 9100
sales.us@dmnwestinghouse.com

INDIA

DMN INDIA PRIVATE LIMITED

+91 9940482573
india@dmnwestinghouse.com

BXXL TYPE

BXXL

Blow through rotary valve with an extra enlarged inlet. Designed for products with poor flowability

BXXL	Ltr/ rev	DIN			ANSI			E	F	G	J	P	Q	R	S	T
		ØA	ØB	D	ØC	ØB	D									
350	19	350	460	16xØ23	530	476,2	12xØ28.6	26	535	245	100	170	210	200	274	622

BXXL	W	X**	Y	Z*	LL	LL max.	RR	SS	TT	ZZ	Type SEW	≥Nm
350	4XØ18	G1/4"(Ø10)	75	UNEF 1 1/8"	70	100	865	460	160	1155	RF47 / FAZ47	285

MZC-II DAIRY **AL/AXL** **BL/BXL** **BXXL**

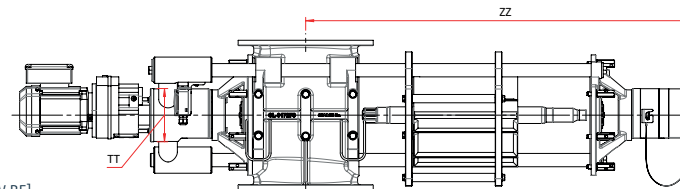
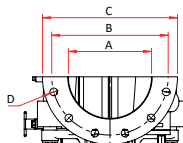
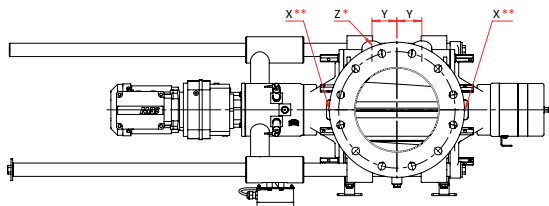
DMN
WESTINGHOUSE



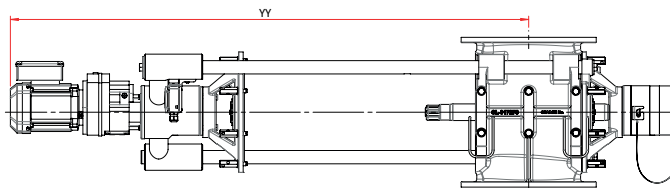
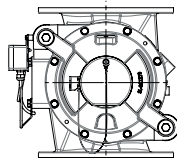
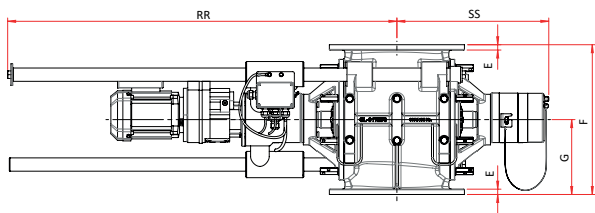
THE FUTURE STANDARD FOR SAFETY,
HYGIENE AND CLEANABILITY

FUTURE-PROOF VALUE SINCE 1950

AL/AXL TYPE



Direct drive with coupling [SEW RF]

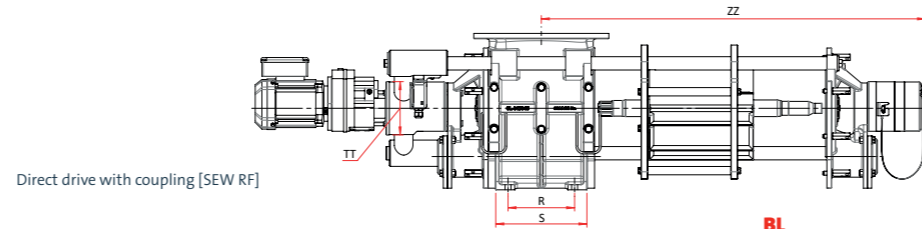
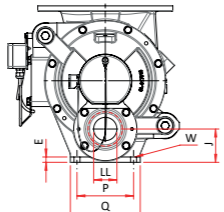
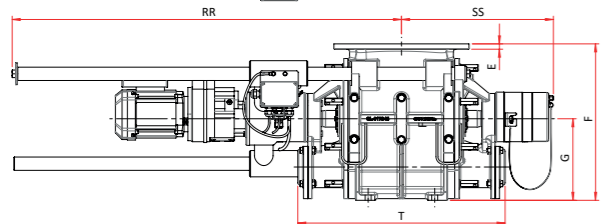
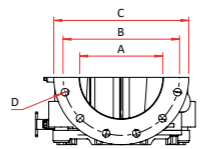
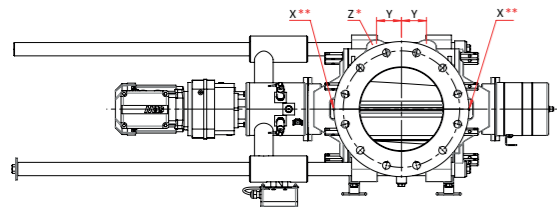


AL
Drop through rotary valve

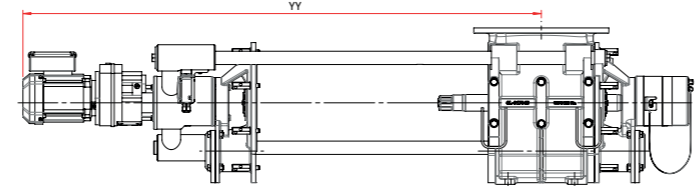
AXL
Drop through rotary valve with an enlarged inlet. Designed for products with poor flowability

AL	AXL	Ltr/rev	DIN			ANSI			DIN			ANSI			F	G	X**	Y	Z*	RR	SS	TT	YY	ZZ	Type SEW	≥Nm				
			ØA	ØB	D	ØC	ØB	D	E	ØA	ØB	D	ØC	ØB													D	E		
150		2,5	150	240	8xØ23	285	241,3	8xØ22.2	12						280	140	G1/4"(Ø10)	40	UNEF 1 1/8"	905	375	120	1285	900	RF37	110				
175	200	5,5	175	270	8xØ23	315	----	----	14	200	295	8XØ23	343	298,4			8xØ22.2	14	330	165	G1/4"(Ø10)	53	UNEF 1 1/8"	965	395	120	1345	960	RF37	150
200	250	10,5	200	295	8xØ23	343	298,4	8xØ22.2	14	250	350	12XØ23	406	361,9			12xØ25.4	16	390	195	G1/4"(Ø10)	65	UNEF 1 1/8"	1095	435	160	1485	1080	RF47	210
250	300	19	250	350	12xØ23	406	361,9	12xØ25.4	16	300	400	12XØ23	483	431,8			12xØ25.4	21	450	225	G1/4"(Ø10)	75	UNEF 1 1/8"	1170	460	160	1560	1155	RF47	285
300	350	34	300	400	12xØ23	483	431,8	12xØ25.4	21	350	460	16XØ23	530	476,2			12xØ28.6	26	540	270	G1/4"(Ø10)	95	UNEF 1 1/8"	1385	600	200	1830	1425	RF57	410
350		58	350	460	16xØ23	530	476,2	12xØ28.6	26						660	330	G1/4"(Ø10)	112	UNEF 1 1/8"	1490	635	200	1935	1530	RF57	560				
AL MZC-II									AXL MZC-II																					

BL/BXL TYPE



Direct drive with coupling [SEW RF]



BL
Blow through rotary valve

BXL
Blow through rotary valve with an enlarged inlet. Designed for products with poor flowability

THE MZC-II ROTARY VALVES OFFER YOU:

- Opens on two sides for unprecedented easy access and superior cleanability
- Easier and safer maintenance than ever before
- Applications for a broad range of industries
- Cleaning In Place (CIP): the rotor remains in position during cleaning
- Additional safety through an integrated emergency safety switch
- Only a direct drive is offered, to allow for ease of opening and cleaning



* By default not pre-drilled
 ** Air purge connection
 Technical modifications are possible, dimensions in mm.

BL	BXL	Ltr/rev	DIN			ANSI			E	DIN			ANSI			F	G	J	P	Q	R	S	T	W	X**	Y	Z*	LL	LL max.	RR	SS	TT	YY	ZZ	Type SEW	≥Nm	
			ØA	ØB	D	ØC	ØB	D		ØB	D	ØB	D	E																							
150		2,5	150	240	8xØ23	285	241,3	8xØ22.2	12							295	155	65	110	140	100	154	462	4xØ12	G1/4"(Ø10)	40	UNEF 1 1/8"	35	50	905	375	120	1285	900	RF37	110	
175	200	5,5	175	270	8xØ23	315	---	---	14	200	295	8xØ23	343	298,4	8xØ22.2	14	340	175	75	130	160	130	190	502	4xØ14	G1/4"(Ø10)	53	UNEF 1 1/8"	50	65	965	395	120	1345	960	RF37	150
200	250	10,5	200	295	8xØ23	343	298,4	8xØ22.2	14	250	350	12xØ23	406	361,9	12xØ25.4	16	410	215	90	160	200	160	230	572	4xØ18	G1/4"(Ø10)	65	UNEF 1 1/8"	50	80	1095	435	160	1485	1080	RF47	210
250	300	19	250	350	12xØ23	406	361,9	12xØ25.4	16	300	400	12xØ23	483	431,8	12xØ25.4	21	470	245	100	170	210	200	274	622	4xØ18	G1/4"(Ø10)	75	UNEF 1 1/8"	70	100	1170	460	160	1560	1155	RF47	285
300	350	34	300	400	12xØ23	483	431,8	12xØ25.4	21	350	460	16xØ23	530	476,2	12xØ28.6	26	565	295	120	190	240	260	350	724	4xØ23	G1/4"(Ø10)	95	UNEF 1 1/8"	100	125	1385	600	200	1830	1425	RF57	410
350		58	350	460	16xØ23	530	476,2	12xØ28.6	26							665	335	132,5	220	270	310	406	794	4xØ23	G1/4"(Ø10)	112	UNEF 1 1/8"	125	150	1490	635	200	1935	1530	RF57	560	
BL MZC-II										BXL MZC-II																											

CONTACT

For more information and other inquiries, please contact us via our sales teams or distributors. You can find the complete list of distributors at dmnwestinghouse.com/distributors.

THE NETHERLANDS

DMN-WESTINGHOUSE

+31 252 361 800
sales@dmnwestinghouse.com

FRANCE

DMN FRANCE SAS

+33 1 69 49 85 70
contact.fr@dmnwestinghouse.com

UK

DMN UK LTD

+44 1249 818 400
dmn.uk@dmnwestinghouse.com

GERMANY

DMN SGT GMBH

+49 4181 931 40
dmn.sgt@dmnwestinghouse.com

USA

DMN INC.

+1 870 733 9100
sales.us@dmnwestinghouse.com

INDIA

DMN INDIA PRIVATE LIMITED

+91 9940482573
india@dmnwestinghouse.com

BXXL TYPE

BXXL

Blow through rotary valve with an extra enlarged inlet. Designed for products with poor flowability

BXXL	Ltr/ rev	DIN			ANSI			E	F	G	J	P	Q	R	S	T
		ØA	ØB	D	ØC	ØB	D									
350	19	350	460	16xØ23	530	476,2	12xØ28.6	26	535	245	100	170	210	200	274	622

BXXL	W	X**	Y	Z*	LL	LL max.	RR	SS	TT	YY	ZZ	Type SEW	≥Nm
350	4XØ18	G1/4"(Ø10)	75	UNEFF 1 1/8"	70	100	1170	460	160	1560	1155	RF47	285