



MEDIUM DUTY AIRLOCK – MLD

The MLD medium-duty valves are suitable for applications where valves with outboard bearings would be over-qualified. The valves give exceptional value for money due to the simple construction and direct drive.

The valves are suited for both conveying and metering purposes. They are ideal for vacuum conveying applications, Big bag unloading, cyclone applications, and general-purpose applications.

The MLD valve is based on the ML-valve body and is suitable for handling powders. The valve has one round flange and one square flange, both of which are larger than the MALD for the same rotor capacity. By this, the valve has a large inlet in

relation to the rotor volume, so that high filling efficiencies are obtained with free-flowing products. The valve can also act as a transition piece from round to square or vice versa.

Available sizes and capacity

Size MLD	100	150	200	250	300	350	400
Capacity* LTR/REV.	0.8	2.5	5.5	10.5	19	34	58

*Capacity per revolution at 100% filling



Specifications

- ▶ Compact design
- ▶ Standard fitted with Nord direct drive
- ▶ Pressure shock resistant up to 10 barg
- ▶ Round flange drilling available to PN 10 and ANSI 150 lbs
- ▶ Suitable for frequency inverter control
- ▶ Sheared angle in-/outlet
- ▶ ATEX 2014/34/EU certification available
- ▶ EC1935/2004 conformity available

Product Information

The valves are available in two materials of construction: cast iron and stainless steel. The cast iron valves are also available nickel or chrome plated.

The standard rotor has 8 fixed blades chamfered on three sides. Various rotor configurations are optionally available with a variety of adjustable blades. The end covers have inboard ball bearings sealed for life. The shaft sealing utilizes lipseals, with the option of air purge.

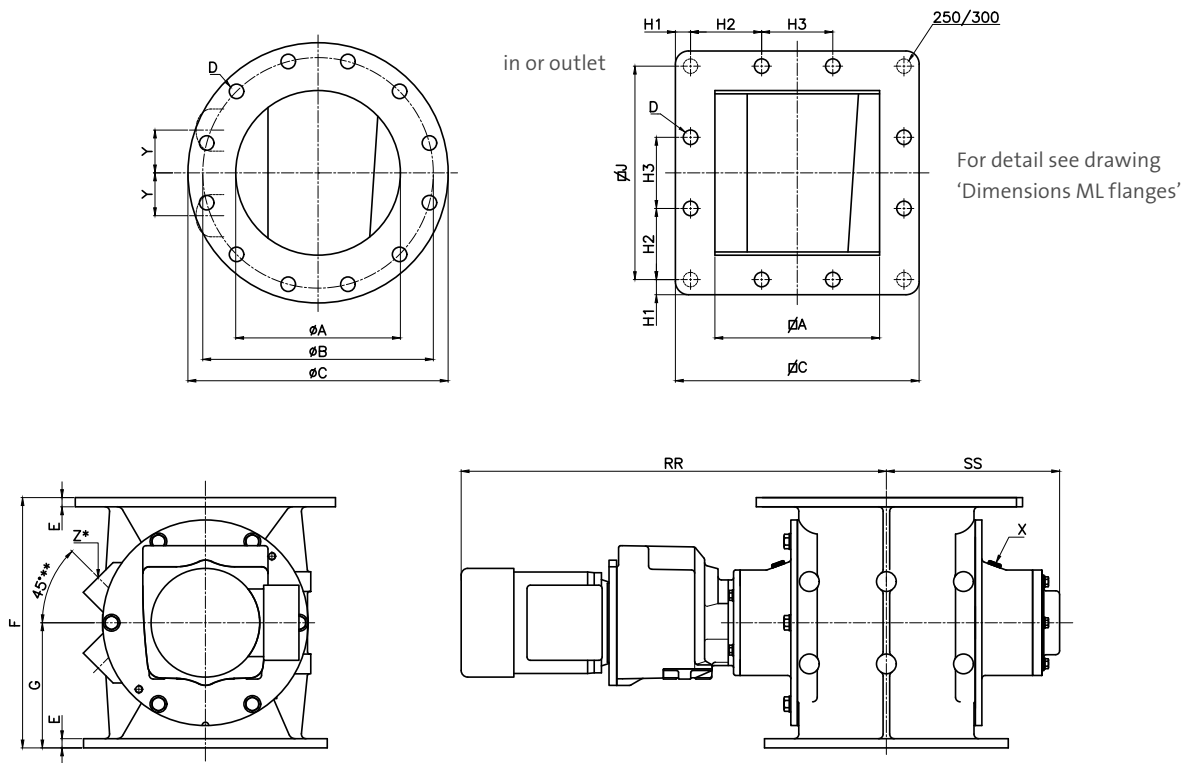
The standard models are suitable for handling products up to a temperature of +65°C and a maximum pressure differential of 1 bar. The valves are pressure shock resistant up to 10 barg.

Application

The MLD is suitable for the following industries:

- ▶ Food
- ▶ Animal feed
- ▶ Pet food
- ▶ Minerals
- ▶ Chemicals
- ▶ Recycling
- ▶ Plastics
- ▶ Biomass
- ▶ Paint

Continued on next page ▶▶



TYPE																					
MLD	Ltr/rev	ϕA	ϕA	ϕB	ϕC	ϕC	D	E	F	G	H1	H2	H3	ϕJ	X	Y	Z^*	RR	SS	Type NORD	$\geq Nm$
100	0.8	100	100	170	210	175	4x $\phi 18$	10.5	170	85	20	135	-	135	1/8"	-	1/2"	469	165	SK172.1F	70
150	2.5	150	150	240	285	267	8x $\phi 23$	11	275	138	88	92	-	222	1/4"	40	3/4"	607	241	SK373.1F	110
200	5.5	200	200	295	340	320	8x $\phi 23$	14	325	163	104	113	-	273	1/4"	53	1"	627	234	SK373.1F	150
250	10.5	250	250	350	395	370	12x $\phi 23$	14	380	190	23	108	108	324	1/4"	65	1 1/4"	709	261	SK573.1F	210
300	19	300	300	400	483	445	12x $\phi 23$	21	450	225	31	128	128	384	1/4"	75	1 1/4"	734	286	SK573.1F	285
350	34	350	350	460	530	530	16x $\phi 23$	21	540	270	109	104	104	460	3/8"	95	1 1/2"	497	344	SK573.1F	410
400	58	400	400	515	595	595	16x $\phi 26$	26	660	330	125	115	115	515	3/8"	112	1 1/2"	852	379	SK673.1F	560

* Standard not pre-drilled.

Technical modifications are possible, dimensions in mm.