



AIRLOCK – AML

The AML rotary valves are suitable for many applications in the metering and pneumatic conveying of products in powder and granular form. The AML valves can also act as a transition piece from round to square and vice versa.

The AML valve range also includes USDA Dairy accepted models and versions conforming to the EC 1935/2004 directive for sanitary use in the food and pharmaceutical industry. These stainless steel valves are easily detachable in a few minutes and meet the highest hygienic standard.

Available sizes and capacity

Size AML	100	150	200	250	300	350	400
Capacity* LTR/REV.	0.8	2.5	5.5	10.5	19	34	58

*Capacity per revolution at 100% filling



Specifications

- ▶ Minimum air leakage
- ▶ High filling efficiency
- ▶ Sheared angle inlet
- ▶ Drilled flanges in accordance with PN10, ANSI 150lbs
- ▶ Easy detachable versions available
- ▶ Large inlet size in relation to rotor volume
- ▶ Body with one round and one square flange
- ▶ Usable as transition piece from round to square and vice versa
- ▶ ATEX Autonomous Protective System (APS) certification available
- ▶ ATEX 2014/34/EU certification available
- ▶ Customised solutions
- ▶ EC1935/2004 conformity available

Product Information

The valves are available in two materials of construction: stainless steel and cast iron. The cast iron valves are also available nickel or chrome-plated or Tungsten coated.

The standard rotor has 9 blades. Various rotor configurations are available, such as adjustable or fixed blades, reduced capacity, scalloped fixed vaned, end disc etc. The end covers have outboard bearing, lubricated and sealed for life. Shaft seals are available with gland packing or lipseal and optional air purge.

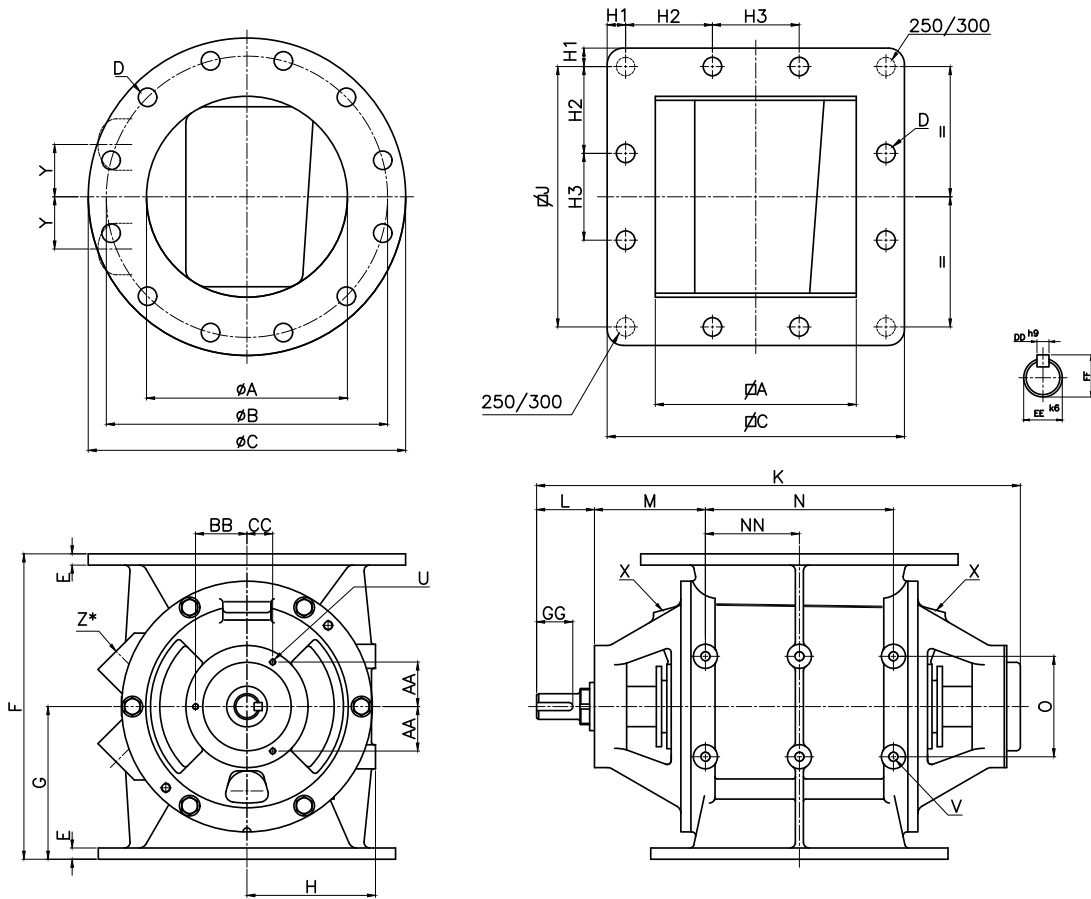
The standard models are suitable for products up to a temperature of +150°C and a maximum pressure differential of 2 bar. Special configurations are available to accommodate temperatures between -200°C and +600°C. Pressure shock resistant up to 10 barg and explosion-proof models are also available. All models offer optimum venting through large vent holes, which are drilled to order.

Application

The AML is suitable for the following industries:

- ▶ Plastics
- ▶ Food
- ▶ Pet food
- ▶ Animal feed
- ▶ Pharmaceutical
- ▶ Infant formula
- ▶ Chemicals
- ▶ Biomass
- ▶ Aquaculture
- ▶ Dairy
- ▶ Cosmetics
- ▶ Paint
- ▶ Minerals
- ▶ Recycling
- ▶ Batteries
- ▶ Tires

Continued on next page ▶▶



TYPE																			
AML	Ltr/rev	ϕA	A	ϕB	ϕC	C	D	E	F	G	H1	H2	H3	J	K	L	M	N	NN
100	0.8	100	100	170	210	175	4x $\phi 18$	11	170	85	20	135	-	135	328	52	84	90	-
150	2.5	150	150	240	285	267	8x $\phi 23$	11	275	138	88	92	-	222	484	60	127	146	73
200	5.5	200	200	295	340	320	8x $\phi 23$	14	325	163	104	113	-	273	524	60	125	190	95
250	10.5	250	250	350	395	370	12x $\phi 23$	14	380	190	23	108	108	324	609	72	138	234	117
300	19	300	300	400	483	445	12x $\phi 23$	21	450	225	31	128	128	384	659	72	138	284	142
350	34	350	350	460	530	530	16x $\phi 23$	21	540	270	109	104	104	460	763	74	150	360	180
400	58	400	400	515	595	595	16x $\phi 26$	26	660	330	125	115	155	515	833	74	155	420	210

TYPE													
AML	O	U	V	W	Y	Z*	AA	BB	CC	DD	EE	FF	GG
100	75	3xM6	4xM10	90	-	-	-	35	35	8	25	28	43
150	100	3xM6	4xM10	110	40	½"	37.1	52.5	37.1	8	30	33	36
200	100	3xM6	6xM10	130	53	1"	37.1	52.5	37.1	8	30	33	36
250	125	3xM8	6xM12	160	65	1 ¼"	55.4	64	32	10	32	35	44
300	125	3xM8	6xM12	190	75	1 ¼"	55.4	64	32	10	32	35	44
350	125	3xM10	6xM12	225	95	1 ½"	73.6	85	42.5	10	38	41	45
400	125	3xM10	6xM12	270	112	1 ½"	73.6	85	42.5	10	38	41	45

Technical modifications are possible, dimensions in mm.