



# AIRLOCK – AML

The AML rotary valves are suitable for many applications in the metering and pneumatic conveying of products in powder and granular form. The AML valves can also act as a transition piece from round to square and vice versa.

The AML valve range also includes USDA Dairy accepted models and versions conforming to the EC 1935/2004 directive for sanitary use in the food and pharmaceutical industry. These stainless steel valves are easily detachable in a few minutes and meet the highest hygienic standard.

## Available sizes and capacity

| Size AML           | 100 | 150 | 200 | 250  | 300 | 350 | 400 |
|--------------------|-----|-----|-----|------|-----|-----|-----|
| Capacity* LTR/REV. | 0.8 | 2.5 | 5.5 | 10.5 | 19  | 34  | 58  |

\*Capacity per revolution at 100% filling



## Specifications

- ▶ Minimum air leakage
- ▶ High filling efficiency
- ▶ Sheared angle inlet
- ▶ Drilled flanges in accordance with PN10, ANSI 150lbs
- ▶ Easy detachable versions available
- ▶ Large inlet size in relation to rotor volume
- ▶ Body with one round and one square flange
- ▶ Usable as transition piece from round to square and vice versa
- ▶ ATEX Autonomous Protective System (APS) certification available
- ▶ ATEX 2014/34/EU certification available
- ▶ Customised solutions
- ▶ EC1935/2004 conformity available

## Product Information

The valves are available in two materials of construction: stainless steel and cast iron. The cast iron valves are also available nickel or chrome-plated or Tungsten coated.

The standard rotor has 9 blades. Various rotor configurations are available, such as adjustable or fixed blades, reduced capacity, scalloped fixed vaned, end disc etc. The end covers have outboard bearing, lubricated and sealed for life. Shaft seals are available with gland packing or lipseal and optional air purge.

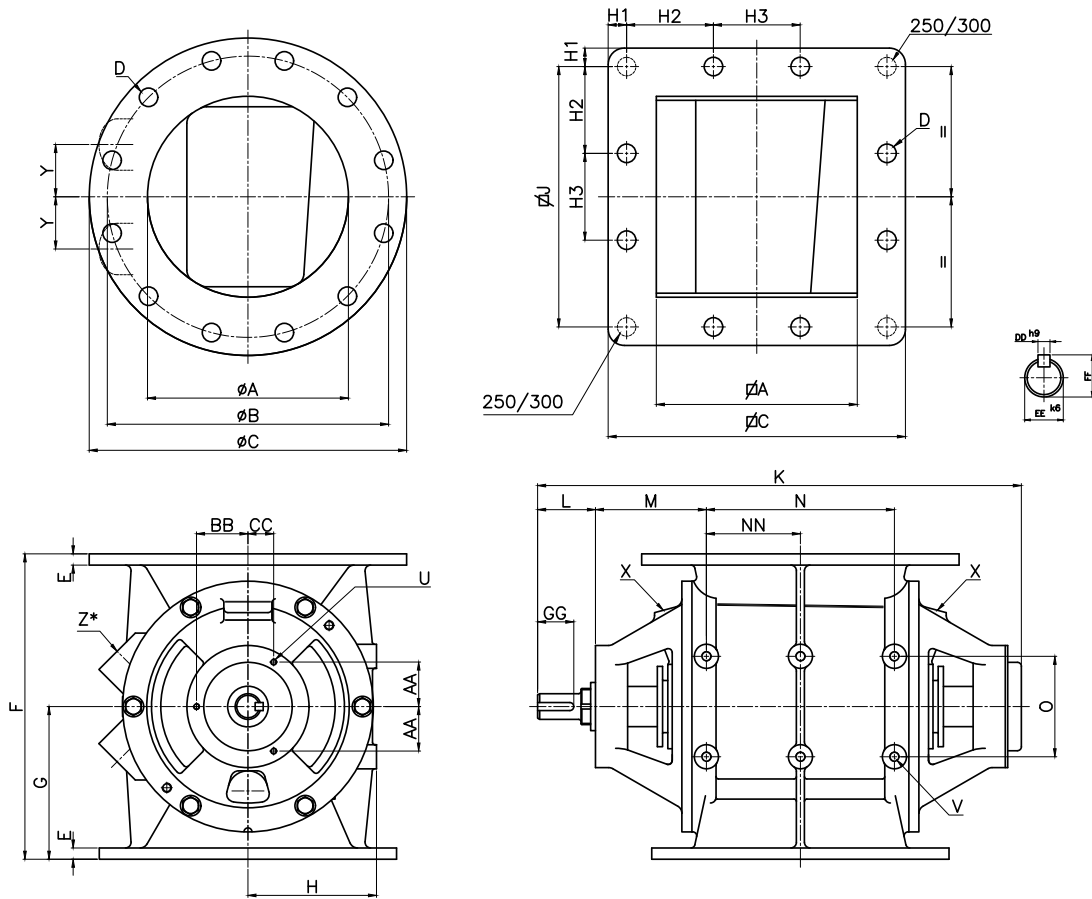
The standard models are suitable for products up to a temperature of +150°C and a maximum pressure differential of 2 bar. Special configurations are available to accommodate temperatures between -200°C and +600°C. Pressure shock resistant up to 10 barg and explosion-proof models are also available. All models offer optimum venting through large vent holes, which are drilled to order.

## Application

The AML is suitable for the following industries:

- ▶ Plastics
- ▶ Food
- ▶ Pet food
- ▶ Animal feed
- ▶ Pharmaceutical
- ▶ Infant formula
- ▶ Chemicals
- ▶ Biomass
- ▶ Aquaculture
- ▶ Dairy
- ▶ Cosmetics
- ▶ Paint
- ▶ Minerals
- ▶ Recycling
- ▶ Batteries
- ▶ Tires

Continued on next page ▶▶



| TYPE |         | ØA  | A   | ØB  | ØC  | C   | D      | E  | F   | G   | H1  | H2  | H3  | J   | K   | L  | M   | N   | NN  |
|------|---------|-----|-----|-----|-----|-----|--------|----|-----|-----|-----|-----|-----|-----|-----|----|-----|-----|-----|
| AML  | Ltr/rev |     |     |     |     |     |        |    |     |     |     |     |     |     |     |    |     |     |     |
| 100  | 0.8     | 100 | 100 | 170 | 210 | 175 | 4xØ18  | 11 | 170 | 85  | 20  | 135 | -   | 135 | 328 | 52 | 84  | 90  | -   |
| 175  | 2.5     | 150 | 150 | 240 | 285 | 267 | 8xØ23  | 11 | 275 | 138 | 88  | 92  | -   | 222 | 484 | 60 | 127 | 146 | 73  |
| 200  | 5.5     | 200 | 200 | 295 | 340 | 320 | 8xØ23  | 14 | 325 | 163 | 104 | 113 | -   | 273 | 524 | 60 | 125 | 190 | 95  |
| 250  | 10.5    | 250 | 250 | 350 | 395 | 370 | 12xØ23 | 14 | 380 | 190 | 23  | 108 | 108 | 324 | 609 | 72 | 138 | 234 | 117 |
| 300  | 19      | 300 | 300 | 400 | 483 | 445 | 12xØ23 | 21 | 450 | 225 | 31  | 128 | 128 | 384 | 659 | 72 | 138 | 284 | 142 |
| 350  | 34      | 350 | 350 | 460 | 530 | 530 | 16xØ23 | 21 | 540 | 270 | 109 | 104 | 104 | 460 | 763 | 74 | 150 | 360 | 180 |
| 400  | 58      | 400 | 400 | 515 | 595 | 595 | 16xØ26 | 26 | 660 | 330 | 125 | 115 | 155 | 515 | 833 | 74 | 155 | 420 | 210 |

| TYPE |     | Ø     | U     | V   | W   | Y    | Z*   | AA   | BB   | CC | DD | EE | FF | GG |
|------|-----|-------|-------|-----|-----|------|------|------|------|----|----|----|----|----|
| AML  |     |       |       |     |     |      |      |      |      |    |    |    |    |    |
| 100  | 75  | 3xM6  | 4xM10 | 90  | -   | -    | -    | 35   | 35   | 8  | 25 | 28 | 43 |    |
| 175  | 100 | 3xM6  | 4xM10 | 110 | 40  | ¾"   | 37.1 | 52.5 | 37.1 | 8  | 30 | 33 | 36 |    |
| 200  | 100 | 3xM6  | 6xM10 | 130 | 53  | 1"   | 37.1 | 52.5 | 37.1 | 8  | 30 | 33 | 36 |    |
| 250  | 125 | 3xM8  | 6xM12 | 160 | 65  | 1 ¼" | 55.4 | 64   | 32   | 10 | 32 | 35 | 44 |    |
| 300  | 125 | 3xM8  | 6xM12 | 190 | 75  | 1 ¼" | 55.4 | 64   | 32   | 10 | 32 | 35 | 44 |    |
| 350  | 125 | 3xM10 | 6xM12 | 225 | 95  | 1 ½" | 73.6 | 85   | 42.5 | 10 | 38 | 41 | 45 |    |
| 400  | 125 | 3xM10 | 6xM12 | 270 | 112 | 1 ½" | 73.6 | 85   | 42.5 | 10 | 38 | 41 | 45 |    |

\* Standard pre-drilled for cast iron

Technical modifications are possible, dimensions in mm.