



AIRLOCK – AL/AXL DAIRY

The AL-AXL Dairy rotary valves are suitable for use in industries where stringent hygienic standards apply. The Dairy valves have an official USDA certificate of acceptance for use in dairy plants and are optionally available conforming to the EC 1935/2004 directive.

The construction of the valve is designed to prevent bacteriological contamination. All product contact surfaces are in food-grade material and are smoothly polished.

The AL-AXL Dairy valves are optionally available in MZC execution with supporting rails for easy removal of the end cover and rotor without damaging the housing.

The AXL size corresponds with the dimension of the inlet flange.

Available sizes and capacity

Size AL	150	175	200	250	300	350
Size AXL		200	250	300	350	
Capacity* FT ³ /REV.	0.09	0.19	0.37	0.67	1.20	2.05



Specifications

- ▶ USDA Dairy accepted
- ▶ EC1935/2004 conformity available
- ▶ Easy removal of the rotor for fast and efficient cleaning
- ▶ Smooth product contact surfaces in food-grade material
- ▶ Rotor pockets radiused and polished to Ra=0,8 µm (150 grit)
- ▶ Rotor vanes chamfered on all edges
- ▶ ATEX 2014/34/EU certification available
- ▶ ATEX Autonomous Protective System (APS) certification available
- ▶ EHEDG Type ED class II certification available

Product Information

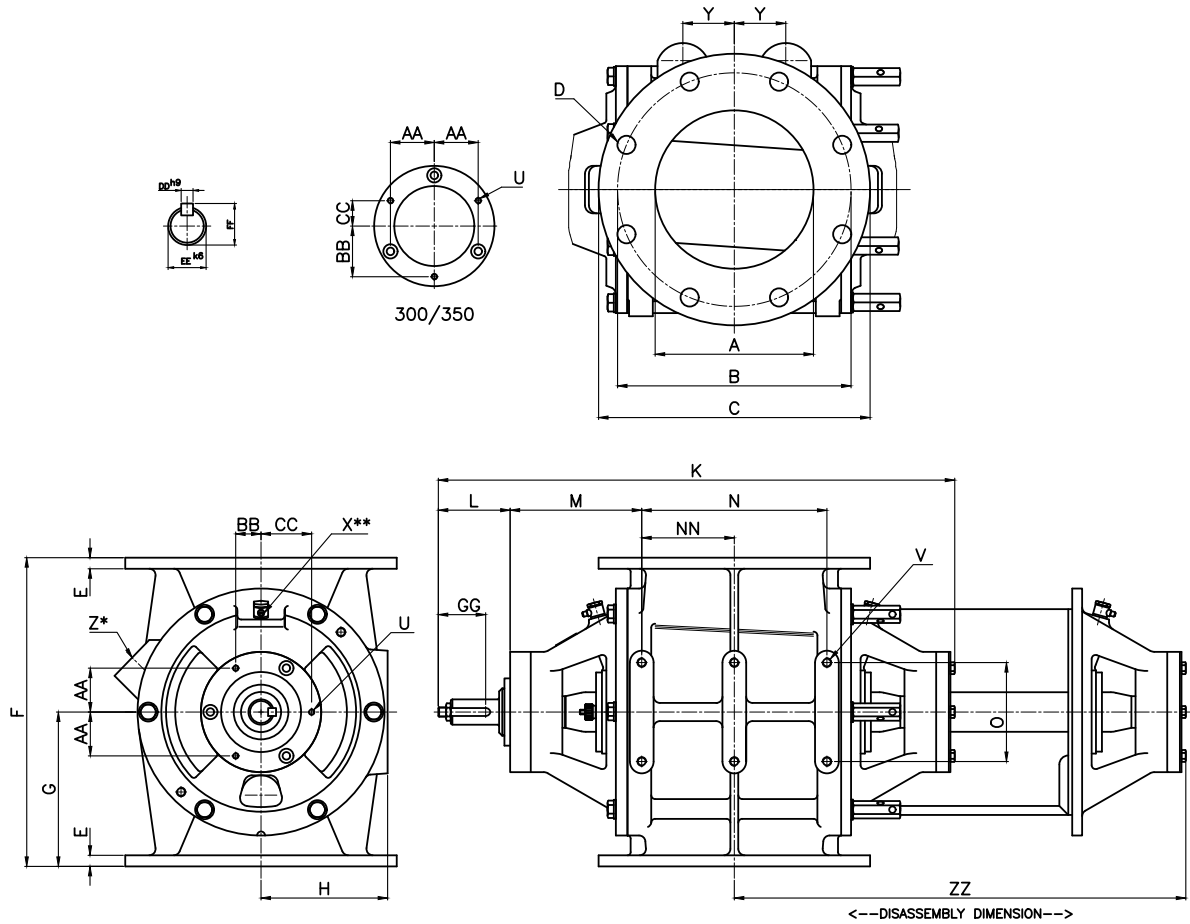
The body and end covers are AISI 316 stainless steel (DIN 1.4408). The rotor is AISI 316L stainless steel (DIN 1.4404). For special applications, internal and external mirror polishing of the valve is possible. The shaft sealing utilizes gland packing or lipseals with air purge option. They are suitable for temperatures up to +302°F and pressure up to 29 PSI. ATEX Autonomous Protective System (APS) certified configurations are available up to 145 PSI.

Application

The AL/AXL Dairy is suitable for the following industries:

- ▶ Plastics
- ▶ Food
- ▶ Pet food
- ▶ Dairy
- ▶ Cosmetics
- ▶ Pharmaceutical
- ▶ Infant formula
- ▶ Chemicals
- ▶ Batteries

Continued on next page ▶▶



AL DAIRY											AXL DAIRY									
TYPE		DIN									ANSI									
AL	AXL	Ft ³ /rev	ØA	ØB	D	ØC	ØB	D	E	H	ØA	ØB	C	ØC	ØB	D	E	H	F	G
150		0.09	5.91	9.45	8xØ0.91	11.22	9.50	8xØ0.81	0.47	4.33									11.02	5.51
175	200	0.19	6.89	10.63	8xØ0.91	12.40	-	-	0.55	5.12	7.87	11.61	8xØ0.91	13.50	11.75	8xØ0.87	0.55	6.50	12.99	6.50
200	250	0.37	7.87	11.61	8xØ0.91	13.50	11.75	8xØ0.87	0.55	6.30	9.84	13.78	12xØ0.91	15.98	14.25	12xØ1.00	0.63	7.78	15.35	7.68
250	300	0.67	9.84	13.78	12xØ0.91	15.98	14.25	12xØ1.00	0.63	7.48	11.81	15.75	12xØ0.91	19.02	17.00	12xØ1.00	0.83	8.76	17.72	8.86
300	350	1.20	11.81	15.75	12xØ0.91	19.02	17.00	12xØ1.00	0.83	8.86	13.78	18.11	16xØ0.91	20.87	18.75	12xØ1.13	0.83	8.86	21.26	10.63
350		2.05	13.78	18.11	16xØ0.91	20.87	18.75	12xØ1.13	1.02	10.63									25.98	12.99

TYPE		K	L	M	N	NN	O	U	V	X	Y	Z*	AA	BB	CC	DD	EE	FF	GG	ZZ
150		20.51	2.83	5.94	5.75	-	3.94	3xM6	4xM10	¼" BSP (Ø10)	1.57	UNEF 1½	1.46	1.46	2.07	0.31	1.18	1.30	1.38	20.94
175	200	22.09	2.83	5.87	7.48	-	3.94	3xM6	4xM10	¼" BSP (Ø10)	2.09	UNEF 1½	1.46	1.46	2.07	0.31	1.18	1.30	1.38	23.31
200	250	25.43	3.31	6.54	9.21	-	4.92	3xM8	4xM12	¼" BSP (Ø10)	2.56	UNEF 1½	2.18	1.26	2.52	0.39	1.26	1.38	1.69	27.24
250	300	27.40	3.31	6.54	11.18	5.59	4.92	3xM8	4xM12	¼" BSP (Ø10)	2.95	UNEF 1½	2.18	1.26	2.52	0.39	1.26	1.38	1.69	30.20
300	350	31.65	3.15	7.28	14.17	7.09	4.92	3xM10	6xM12	¼" BSP (Ø10)	3.74	UNEF 1½	2.90	3.35	1.67	0.39	1.50	1.61	1.73	36.02
350		34.41	3.15	7.28	16.54	8.27	4.92	3xM10	6xM12	¼" BSP (Ø10)	4.41	UNEF 1½	2.90	3.35	1.67	0.39	1.50	1.61	1.73	39.37

* Standard pre-drilled for cast iron

** Air purge connection

Technical modifications are possible, dimensions in inches.