

WE ADD SUSTAINABILITY TO **AQUACULTURE**

- LESS FEED DEGRADATION
- BETTER-FED FISH
- LESS WATER POLLUTION



FUTURE-PROOFING THE GROWING ROLE OF AQUACULTURE WORLDWIDE

A growing world population will increasingly depend on the availability of protein. As fish provides a rich and healthy source of protein, fish consumption will keep growing. That makes reliable solutions for feeding fish crucial for the industry's success.

Through the years, DMN-WESTINGHOUSE has gained deep industry knowledge and created aquaculture solutions that make a difference. For the fish, for the environment, and for your return on investment.

SUSTAINABLE FEEDING THROUGH RELIABLE ROTARY VALVES

Fish are picky. When fish feed suffers degradation on the way from the bunkers to the pens, fish will not touch it. The degraded pellets sink to the bottom, and pollute the water. Because the fish do not develop as well, nor as rapidly, feed degradation costs you more than you budgeted for.

Successful feeding starts with reliable rotary valves that minimise feed degradation while handling tons of abrasive fish feed daily. Fatty fish feed tends to build up in the rotors, leading to reduced capacity, heavy wear of the rotary valves, and increased downtime for cleaning and repairs. The AL and BL series rotary valves of DMN-WESTINGHOUSE are designed to transport any fish feed with the least possible congestion while offering optimal ease of cleaning and servicing, to increase the service life of the rotary valve.

SUSTAINABILITY AT OUR CORE

Our world merits careful stewardship; after all, we have only one. At DMN-WESTINGHOUSE, we understand that impactful change begins with oneself. Thus, we prioritise sustainable engagement with both our planet and our people.

ecovadis



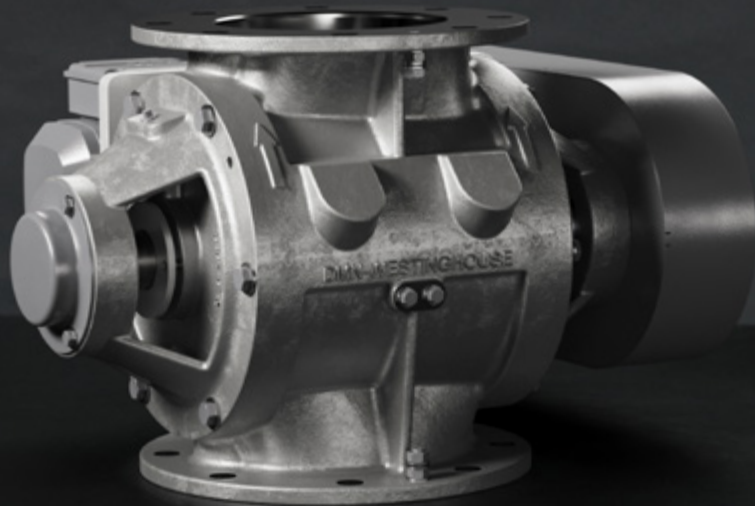


95% OF FISH FARMS RELY ON DMN-WESTINGHOUSE

DMN-WESTINGHOUSE designs and manufactures reliable rotary valves which are up to the task. Their precise engineering with minimal clearance between the blades and the housing, combined with carefully designed inlet restrictors, ensures less breakage of the feed and reduces downtime for cleaning and repairs. The quality of our rotary valves, combined with our worldwide network of distributors and sales offices, makes DMN-WESTINGHOUSE the preferred brand for aquaculture. This is why 95% of fish farms rely on the rotary valves of DMN-WESTINGHOUSE.

DISCOVER OUR SELECTION FOR **AQUACULTURE**

DMN-WESTINGHOUSE offers fit-for-purpose rotary valves with good product handling, cleanability, and easy maintenance.



AL – ROTARY VALVE

THE BENEFITS FOR AQUACULTURE

- An interchangeable rotor with nine blades.
- Worldwide stocked rotors for fast distribution.
- Fixed vane or interchangeable and adjustable blades.
- Fitted with outboard bearings, lubricated and sealed for life.

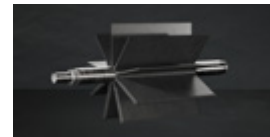
GENERAL SPECIFICATIONS

- High filling efficiency.
- Sheared angle inlet.
- Detachable, easy-to-clean versions available.

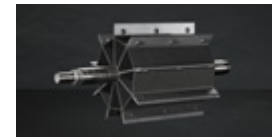
ROTOR OPTIONS AND CONFIGURATIONS

At DMN-WESTINGHOUSE, we have a rotor for every application. With specific rotors, we can effectively tune every rotary valve to optimal performance for your specific application, from ultimate hygiene to endurance to abrasive materials.

Fixed vanes



Replaceable and adjustable blades



AVAILABLE SIZES AND CAPACITY

AL	150 (6")	175 (7")	200 (8")	250 (10")
Ltr./rev.*	2.5	5.5	10.5	19
Ft ³ /rev.*	0.09	0.18	0.37	0.67

*At 100% filling

BL – ROTARY VALVE

THE BENEFITS FOR AQUACULTURE

- An interchangeable rotor with nine blades.
- Worldwide stocked rotors for fast distribution.
- Fixed vane or interchangeable, adjustable blades.
- Fitted with outboard bearings, lubricated and sealed for life.
- Specialised production line for interchangeable aquaculture rotors.
- 100% laser-tested quality rotors.

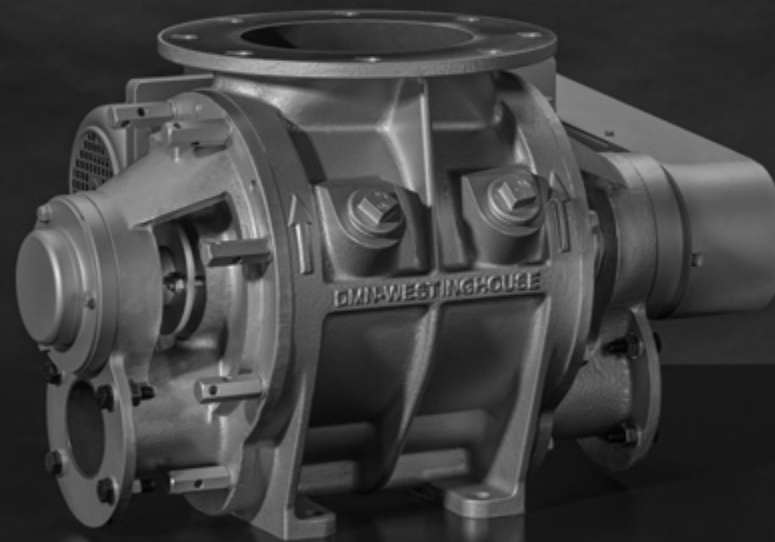
GENERAL SPECIFICATIONS

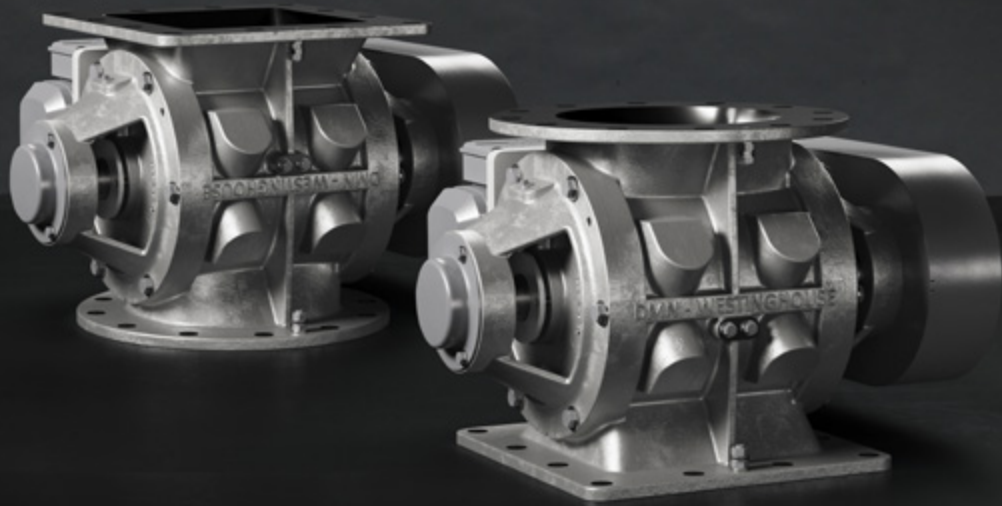
- High filling efficiency.
- Sheared angle inlet.
- Detachable, easy-to-clean versions available.
- Minimum air leakage.
- Versions with option for interchangeable rotor blade available.

AVAILABLE SIZES AND CAPACITY

BL	150 (6")	175 (7")	200 (8")	250 (10")
Ltr./rev.*	2.5	5.5	10.5	19
Ft ³ /rev.*	0.09	0.18	0.37	0.67

*At 100% filling





Available as square to round and round to square.

AML – ROTARY VALVE

THE BENEFITS FOR AQUACULTURE

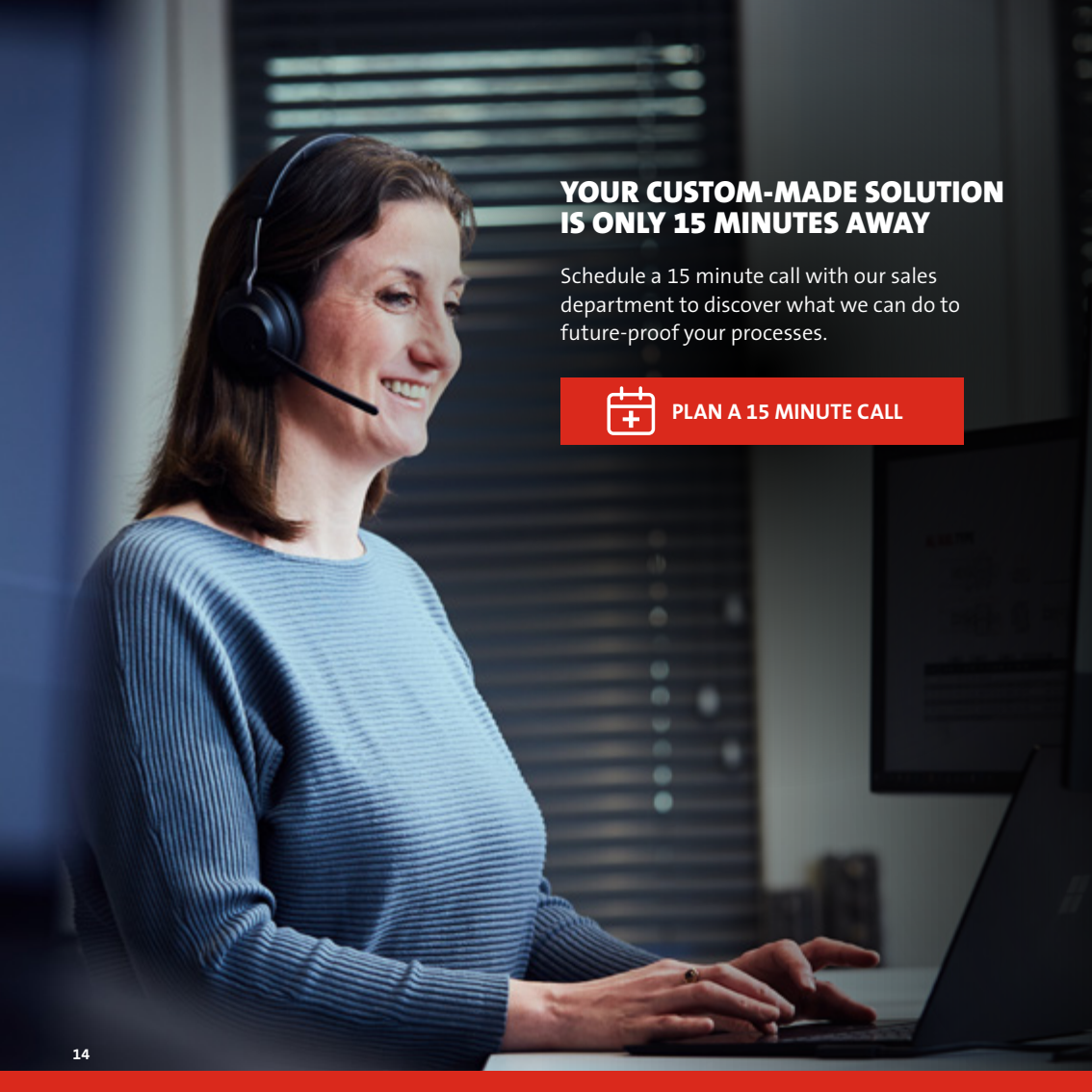
- An interchangeable rotor with nine blades
- Worldwide stocked rotors for fast distribution.
- Fixed vane or interchangeable and adjustable blades.
- Fitted with outboard bearings, lubricated and sealed for life.

GENERAL SPECIFICATIONS

- High filling efficiency.
- Sheared angle inlet.
- Available detachable, easy-to-clean versions.
- Minimum air leakage.
- Versions with option for interchangeable rotor blade available.

TYPE	AVAILABLE SIZES AND CAPACITY						
AML	100 (4")	150 (6")	200 (8")	250 (10")	300 (12")	350 (14")	400 (16")
Ltr./rev.*	0.8	2.5	5.5	10.5	19	34	58
Ft ³ /rev.*	0.03	0.09	0.19	0.37	0.67	1.20	2.05

*At 100% filling



YOUR CUSTOM-MADE SOLUTION IS ONLY 15 MINUTES AWAY

Schedule a 15 minute call with our sales department to discover what we can do to future-proof your processes.



PLAN A 15 MINUTE CALL

CONTACT



WORLDWIDE DISTRIBUTION NETWORK

We are a global company with sales offices and distributors around the world. With our knowledge and expertise, we provide custom-made solutions and support to meet the unique needs of each customer. For more information and other inquiries, please contact your local sales team or distributor. You can find a complete list of distributors at dmnwestinghouse.com/distributors.

THE NETHERLANDS

DMN-WESTINGHOUSE

Gieterij 3
2211 WC Noordwijkerhout
+31 252 361 800
sales@dmnwestinghouse.com

GERMANY

DMN SGT GMBH

Lanzstraße 1
D-21244 Buchholz in der Nordheide
+49 4181 931 40
dmn.sgt@dmnwestinghouse.com

FRANCE

DMN FRANCE SAS

Abbaye Royale de Yerres
20, Rue Raymond Poincaré
F-91330 Yerres
+33 1 69 49 85 70
contact.fr@dmnwestinghouse.com

USA

DMN INC.

220 South Woods St.
West Memphis, AR 72301
+1 870 733 9100
sales.us@dmnwestinghouse.com

UNITED KINGDOM

DMN UK LTD

Units 1 & 2, 9 Harris Road
Porte Marsh Industrial Estate
Calne, Wiltshire, SN11 9pt, UK
+44 1249 818 400
dmn.uk@dmnwestinghouse.com

INDIA

DMN INDIA PRIVATE LIMITED

2nd floor, no. 28 Gnt Road | SF No. 58/2a
Thandalkalani, Puzhal, Tiruvallur
Chennai – 600066, Tamil Nadu
+91 9940482573
india@dmnwestinghouse.com



DMNWESTINGHOUSE.COM